

ROOFLOGIC SYSTEM:
ULTRATHERM XTREME
(SINGLE PLY MEMBRANE)

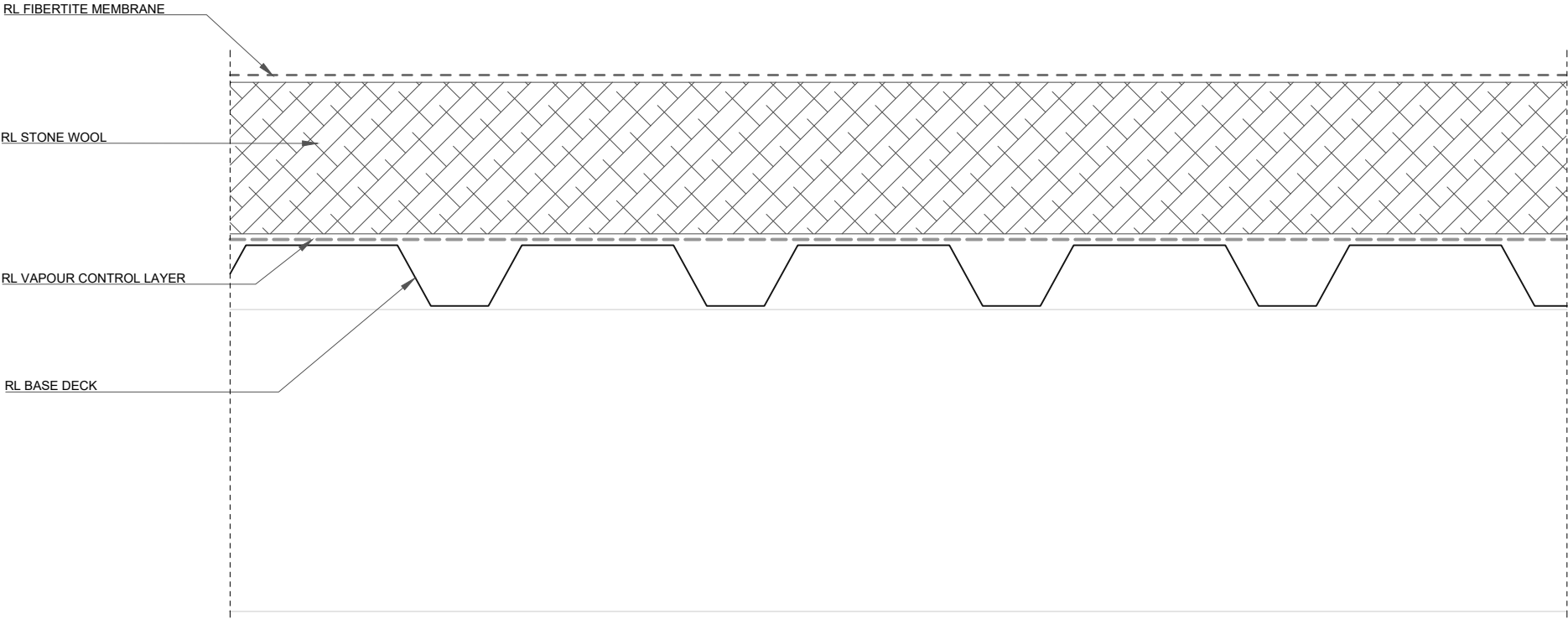
DRAWING:
TYPICAL ROOF

DRAWING NUMBER: 100B

DRAWN SCALE: NTS

ROOFLOGIC.CO.NZ

This drawing is the copyright of Rooflogic. Modification of details for job specification requirements must be approved by Rooflogic. The building designer is ultimately responsible to ensure all building work is designed and constructed according to Building Code requirements, NZ standards and best code of practice industry guidelines. All components must be supplied by Rooflogic. Rooflogic reserves the right to alter or upgrade details at any time without prior notice.



ROOFLOGIC SYSTEM:
ULTRATHERM XTREME
(SINGLE PLY MEMBRANE)

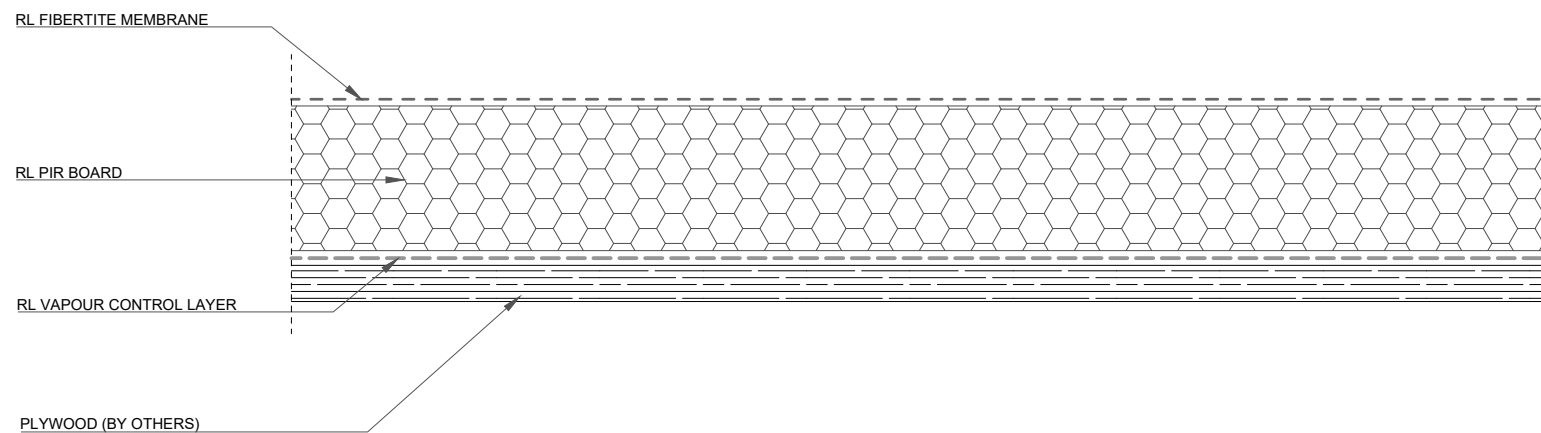
DRAWING:
TYPICAL ROOF – STONE WOOL

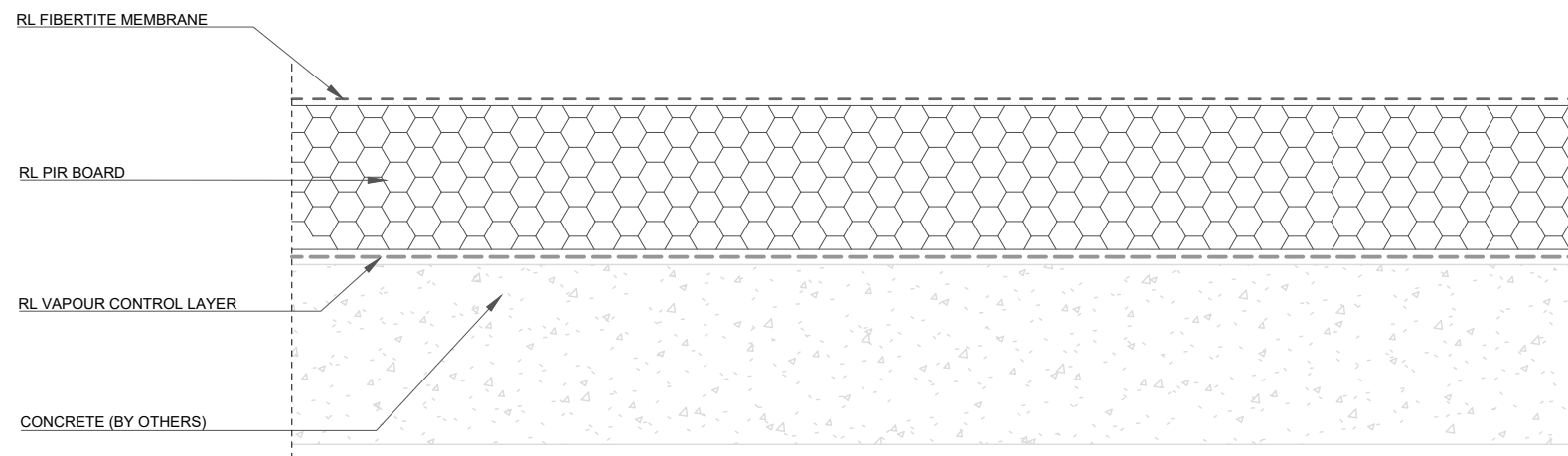
DRAWING NUMBER: 102

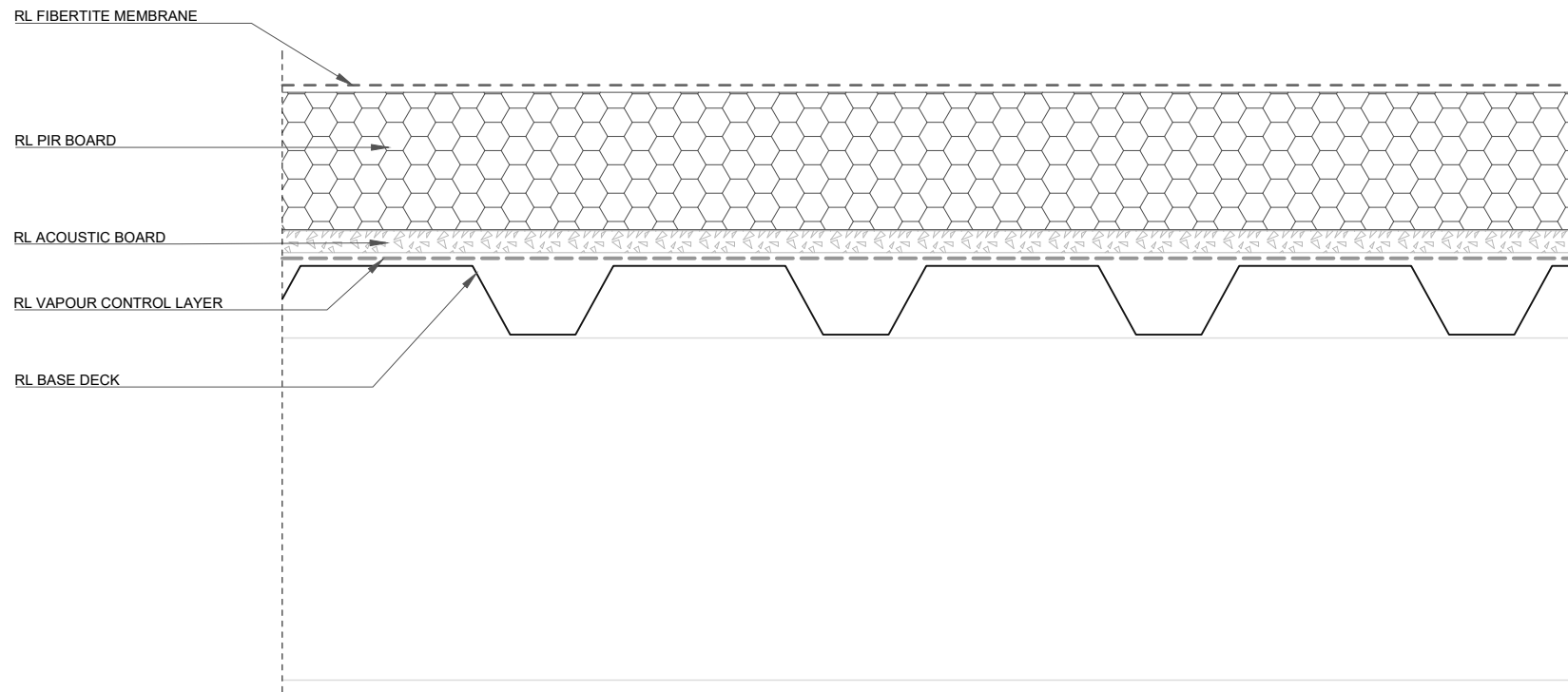
DRAWN SCALE: NTS

Rooflogic.co.nz

This drawing is the copyright of Rooflogic. Modification of details for job specification requirements must be approved by Rooflogic. The building designer is ultimately responsible to ensure all building work is designed and constructed according to Building Code requirements, NZ standards and best code of practice industry guidelines. All components must be supplied by Rooflogic. Rooflogic reserves the right to alter or upgrade details at any time without prior notice.







ROOFLOGIC SYSTEM:
ULTRATHERM XTREME
(SINGLE PLY MEMBRANE)

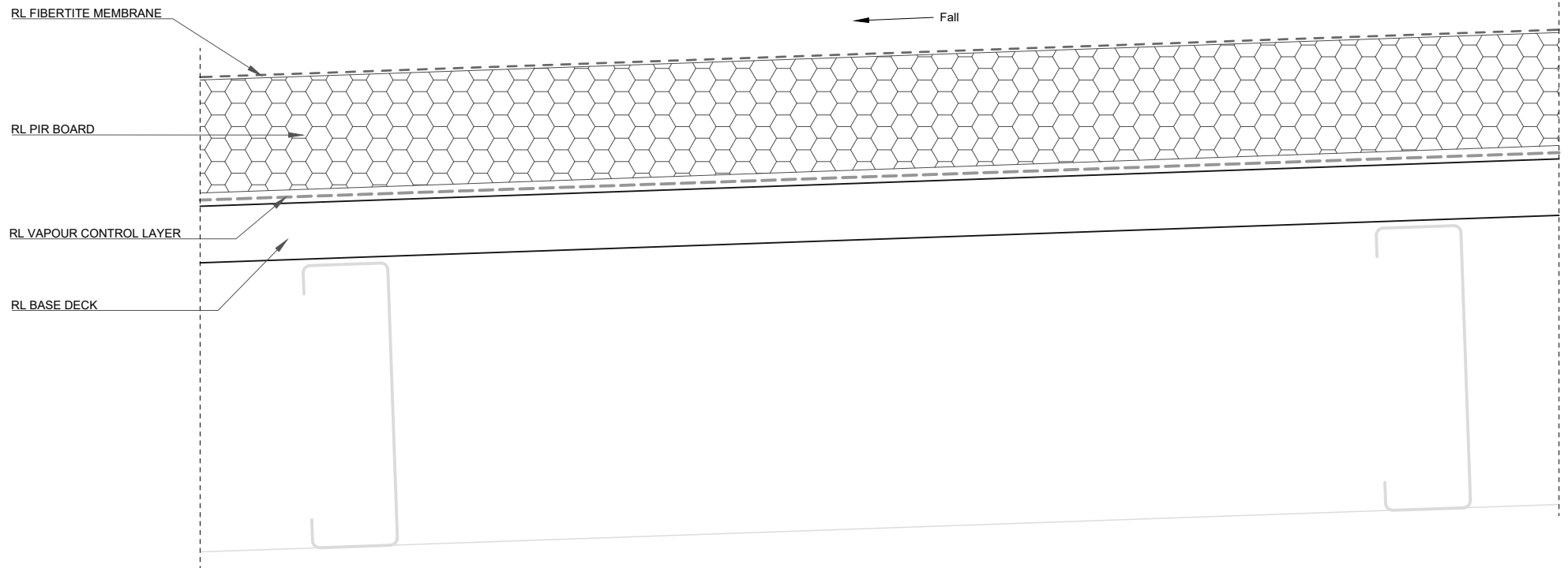
DRAWING:
TYPICAL ROOF – ACOUSTIC BOARD

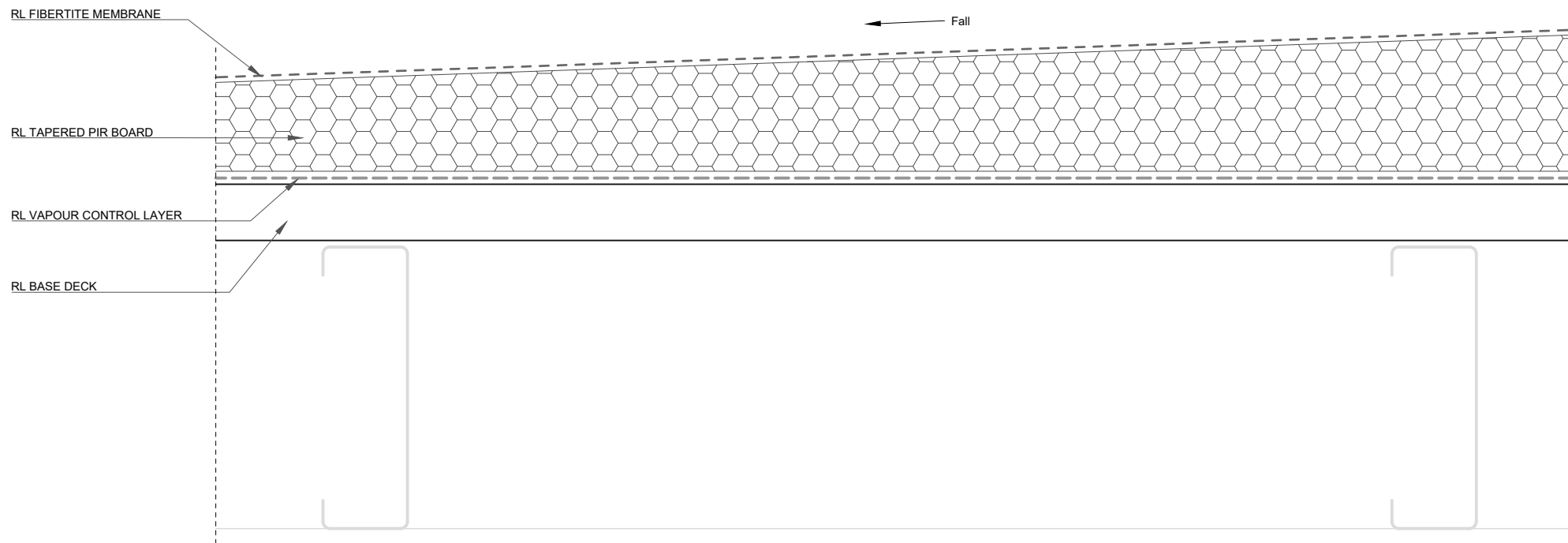
DRAWING NUMBER: 106

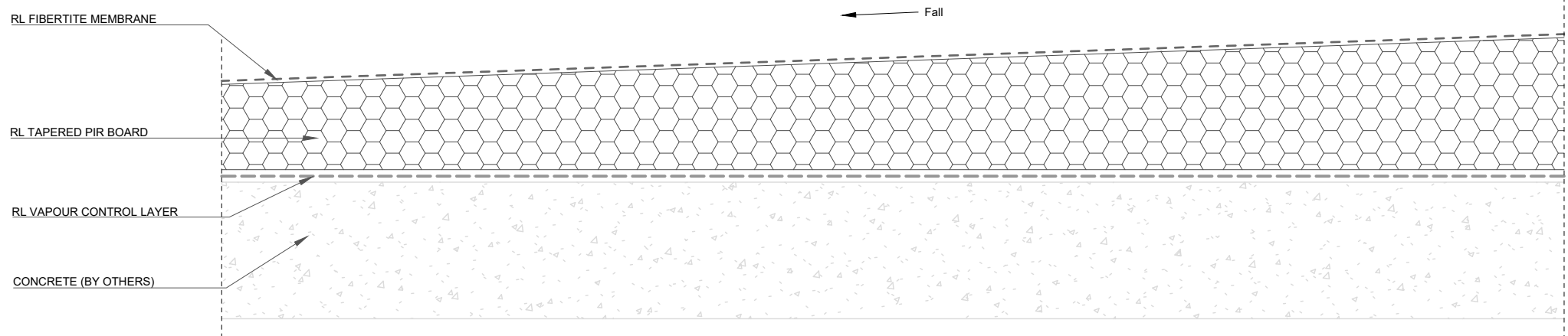
DRAWN SCALE: NTS

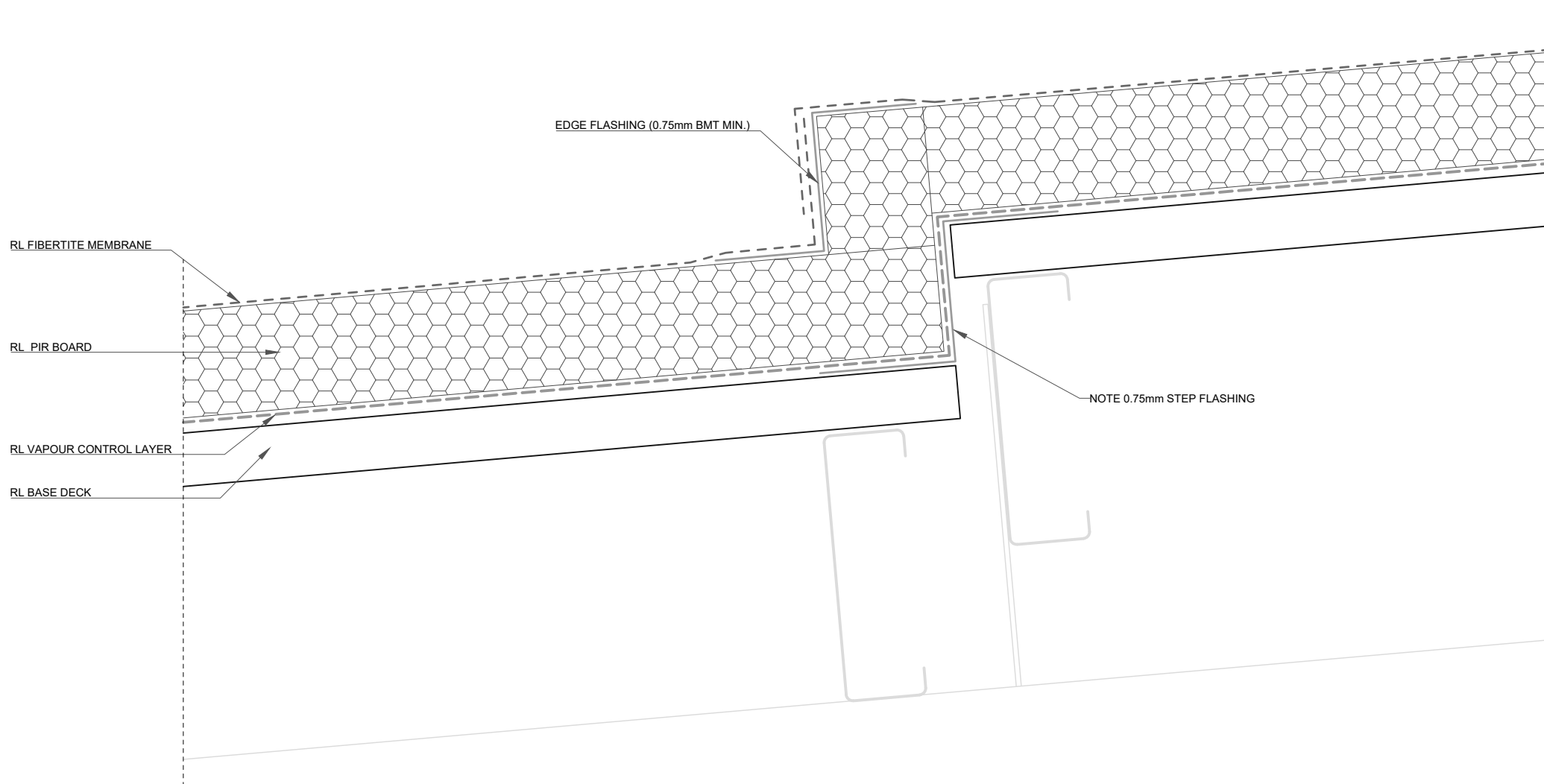
ROOFLOGIC.CO.NZ

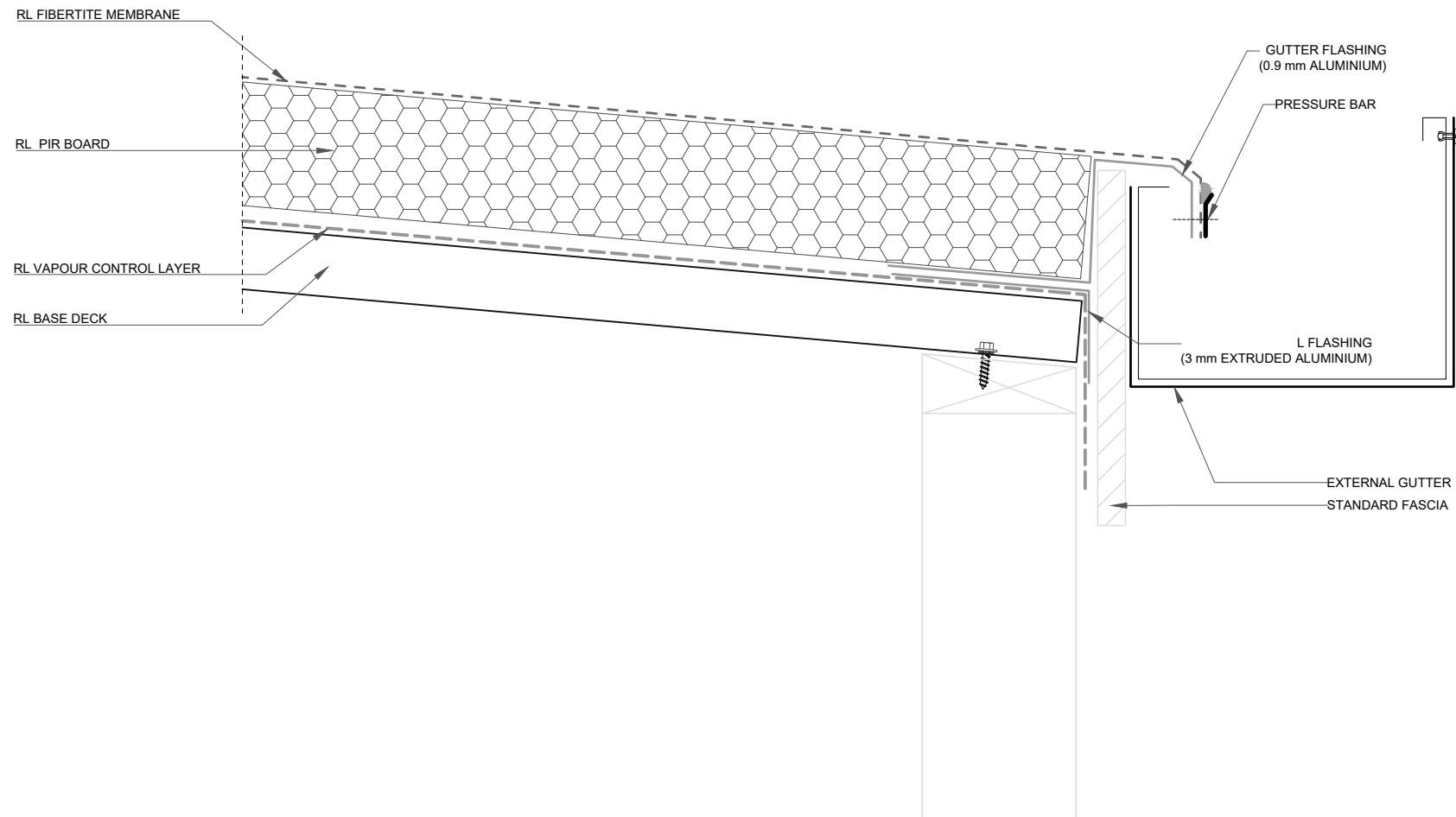
This drawing is the copyright of Rooflogic. Modification of details for job specification requirements must be approved by Rooflogic. The building designer is ultimately responsible to ensure all building work is designed and constructed according to Building Code requirements, NZ standards and best code of practice industry guidelines. All components must be supplied by Rooflogic. Rooflogic reserves the right to alter or upgrade details at any time without prior notice.

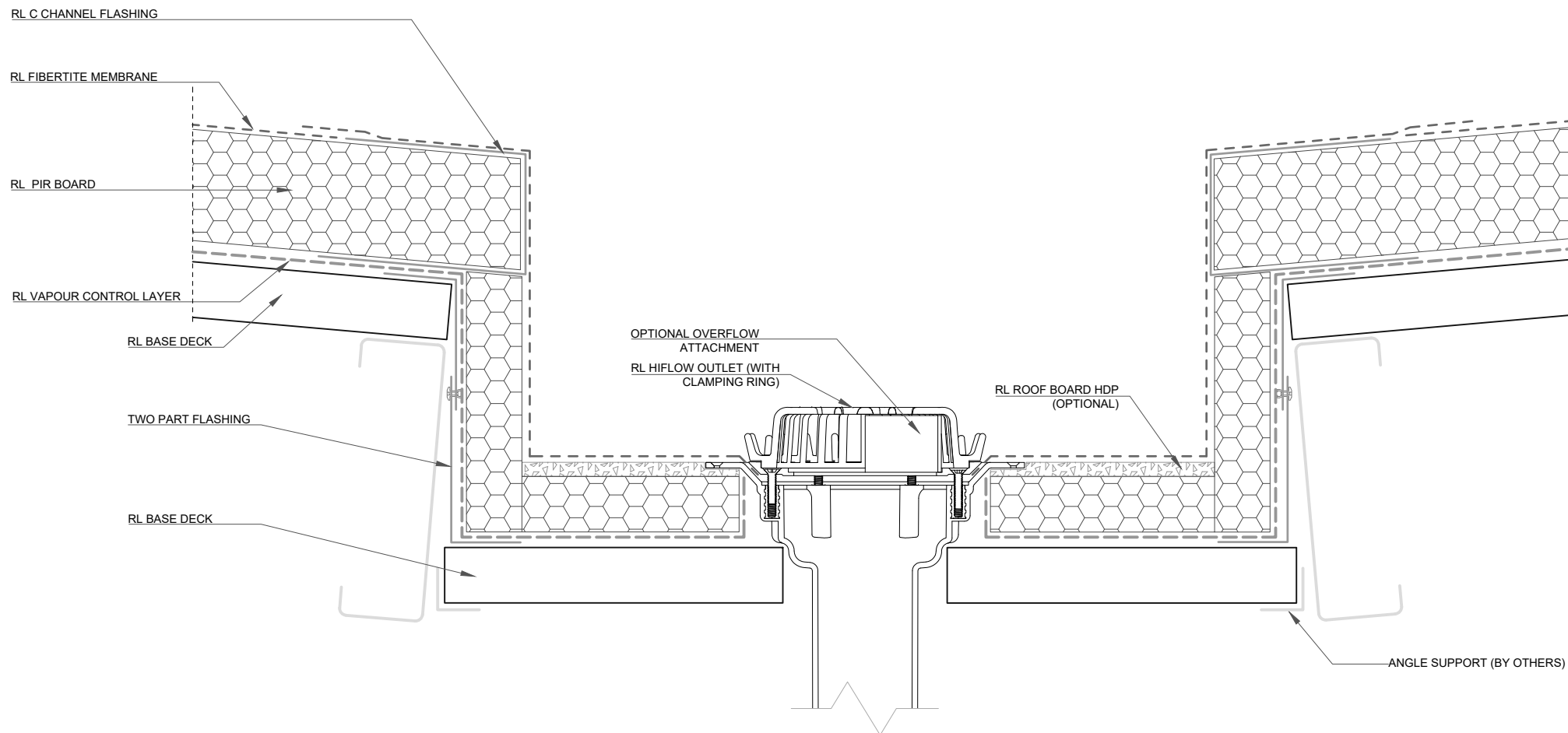


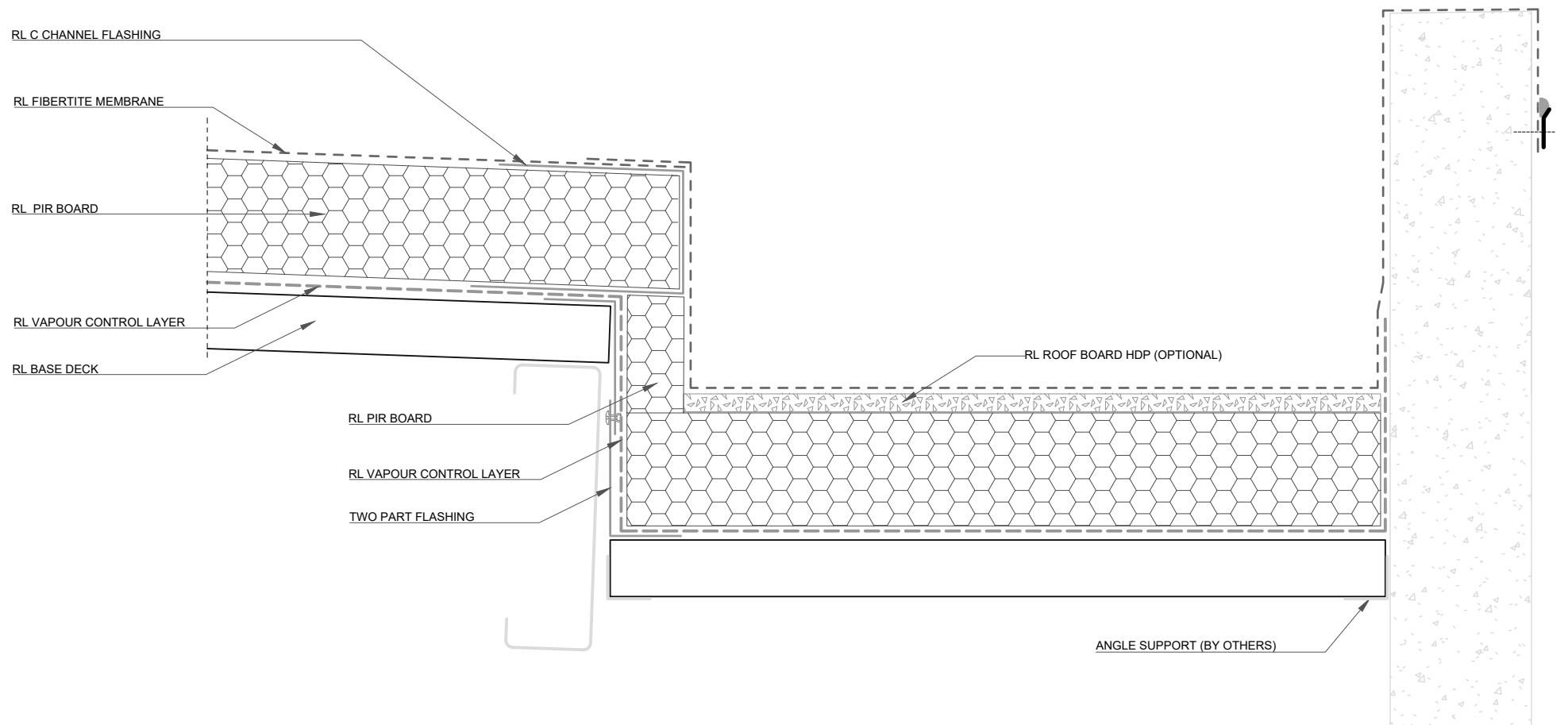


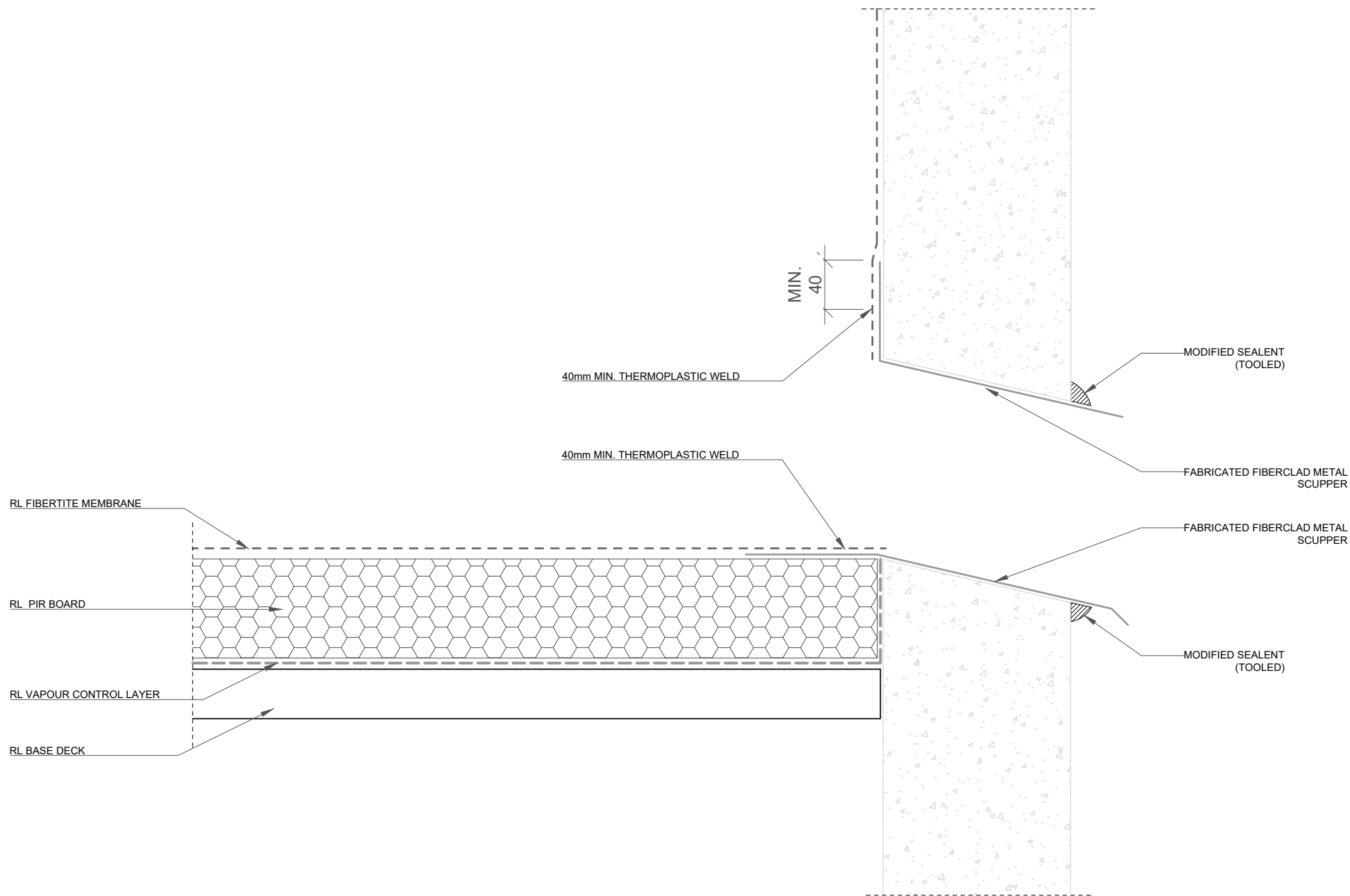


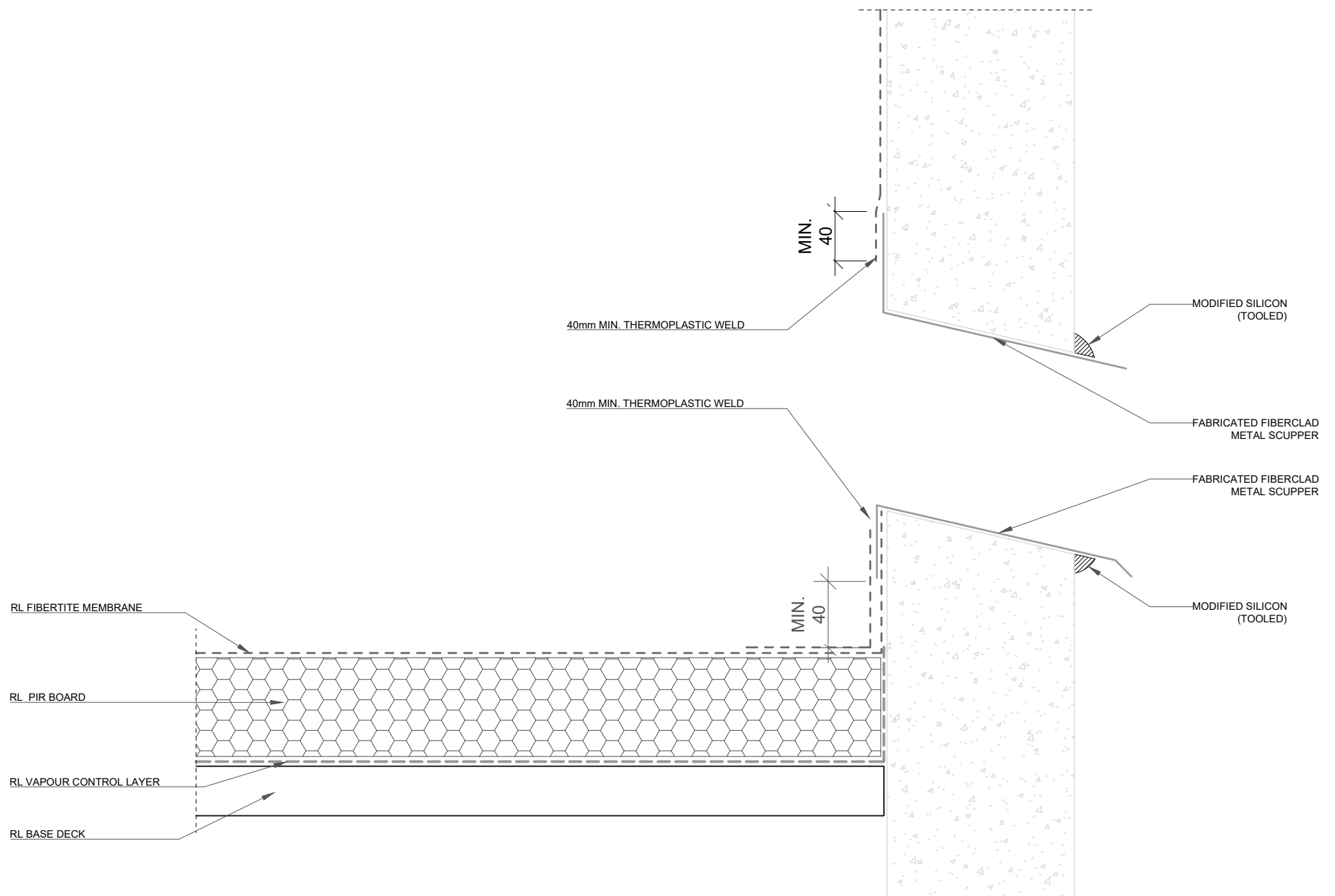


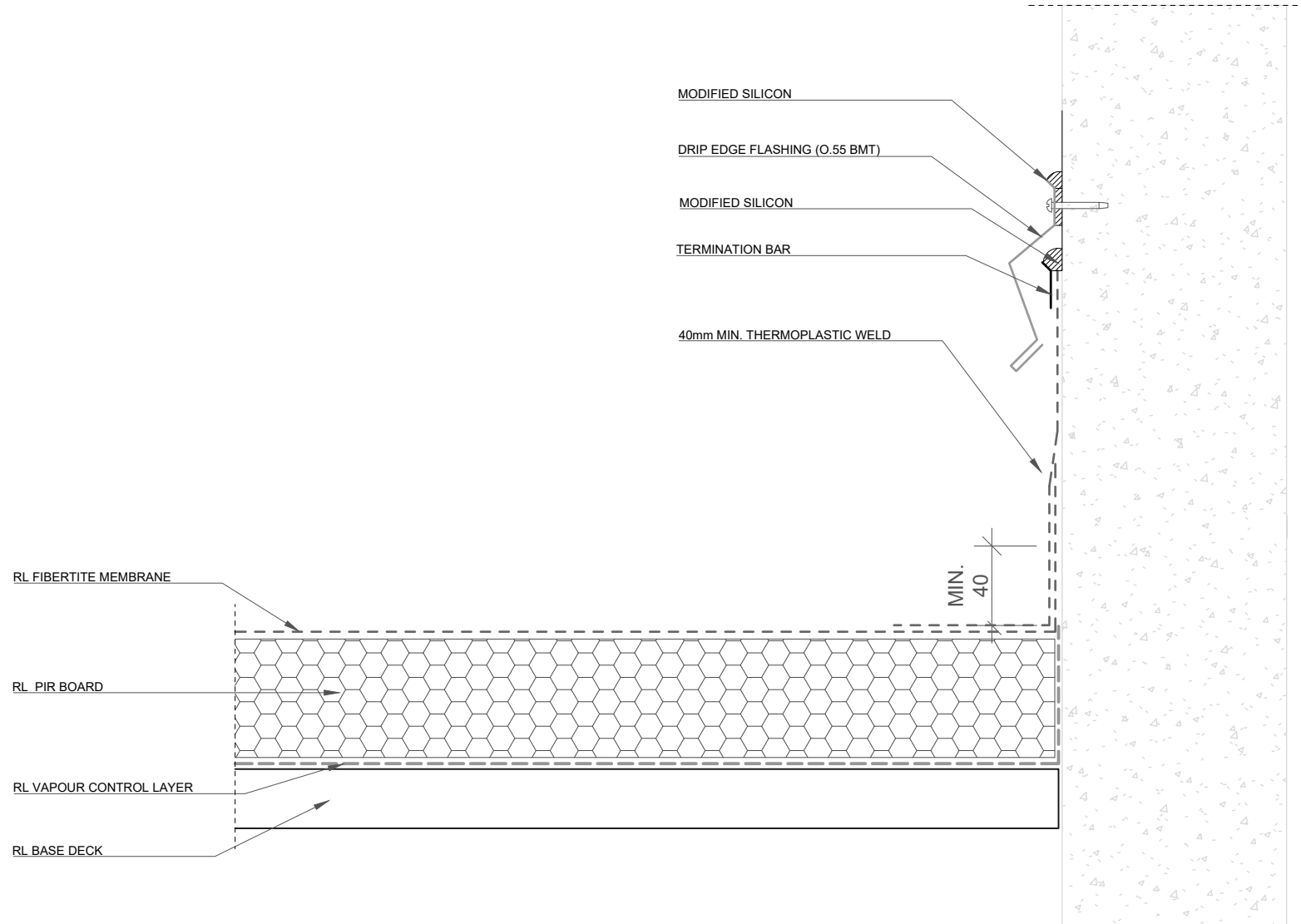


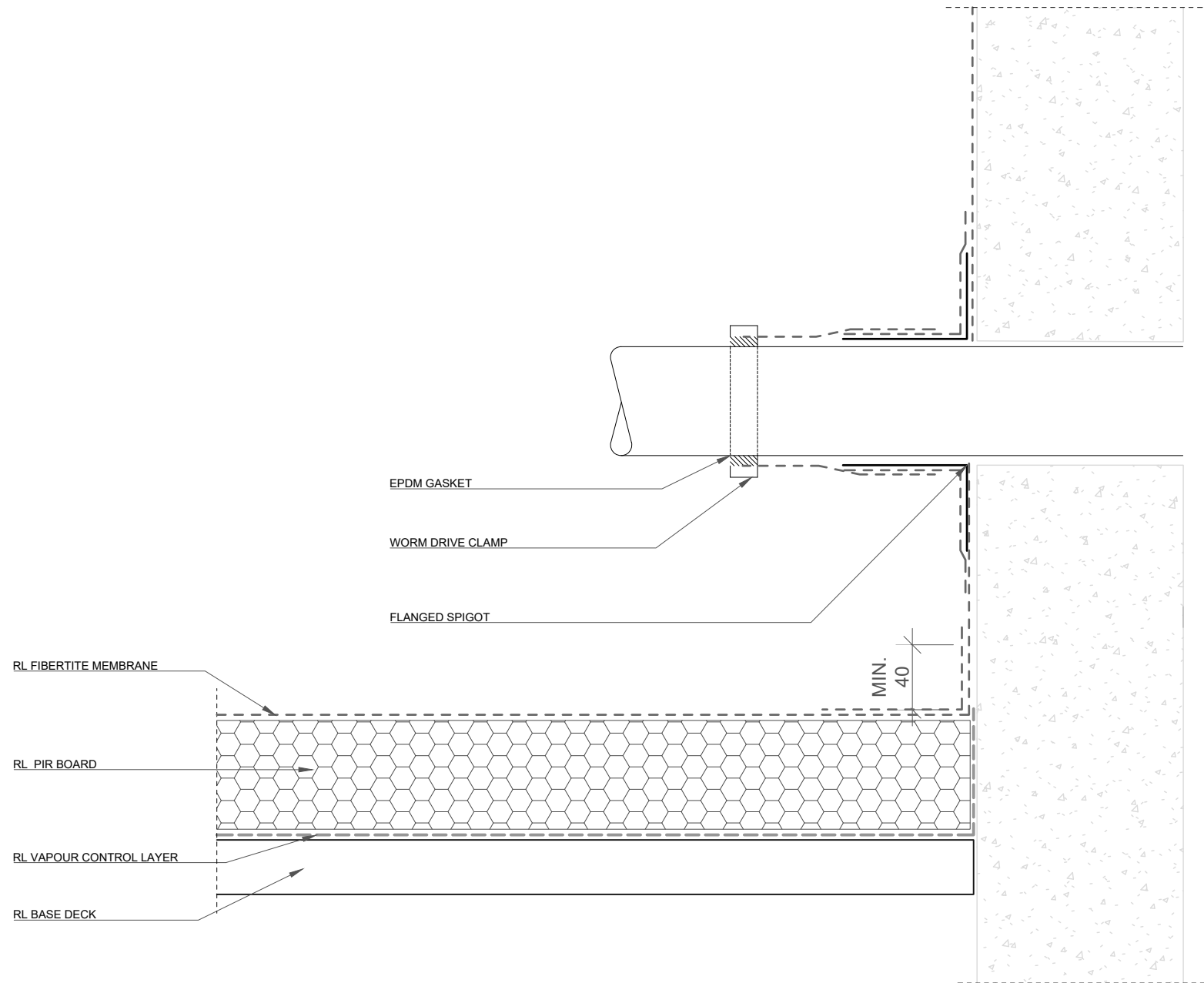


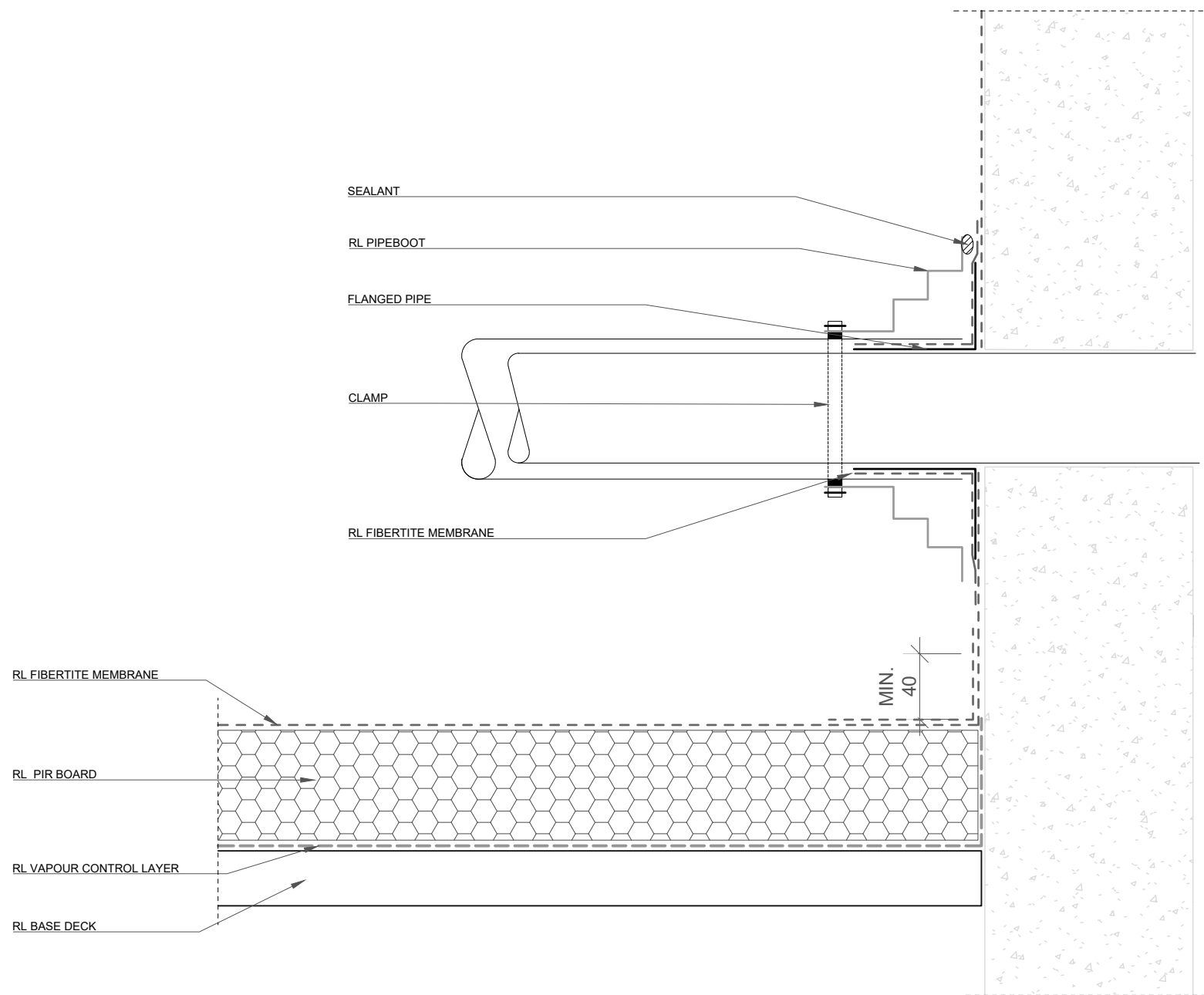


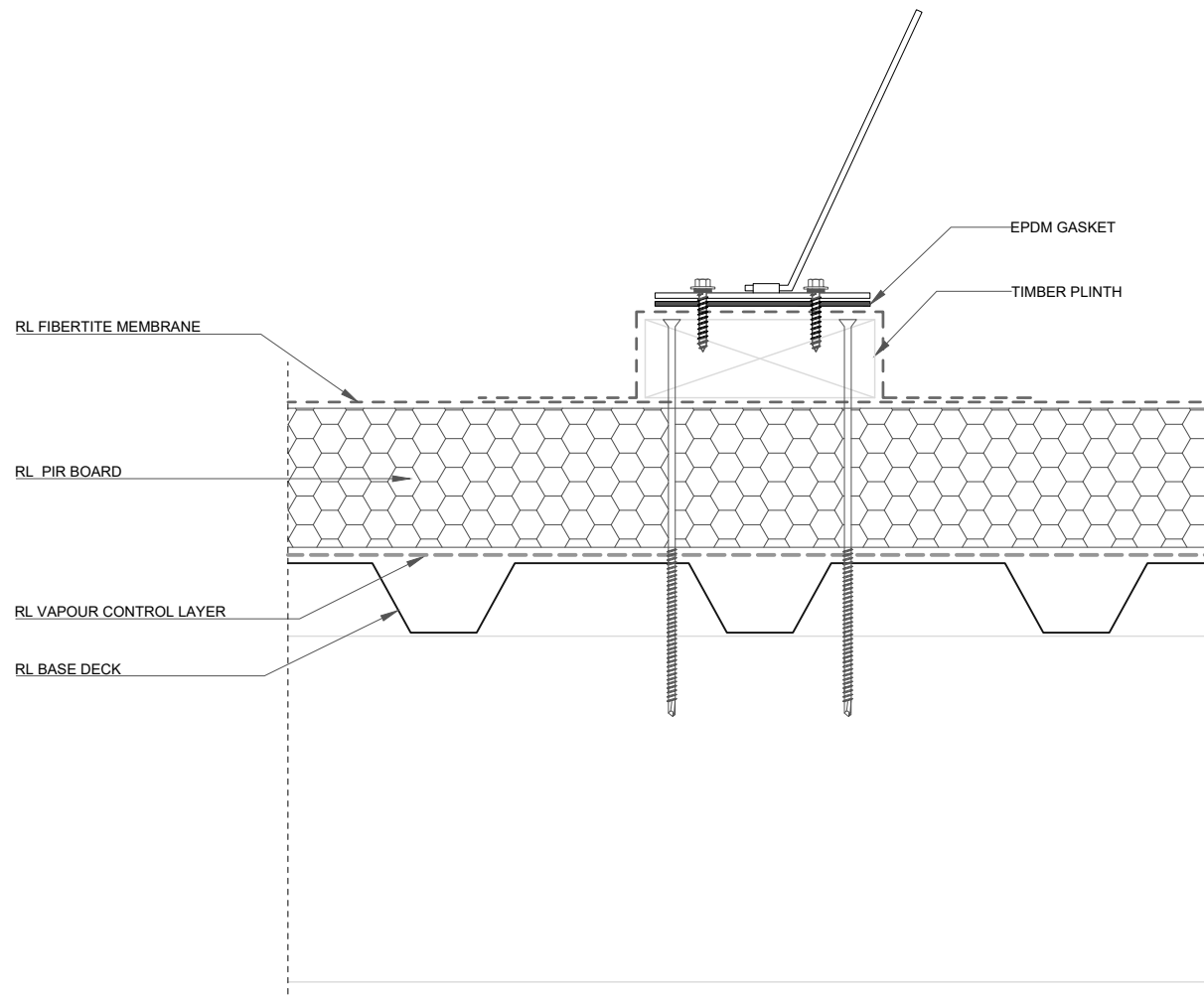


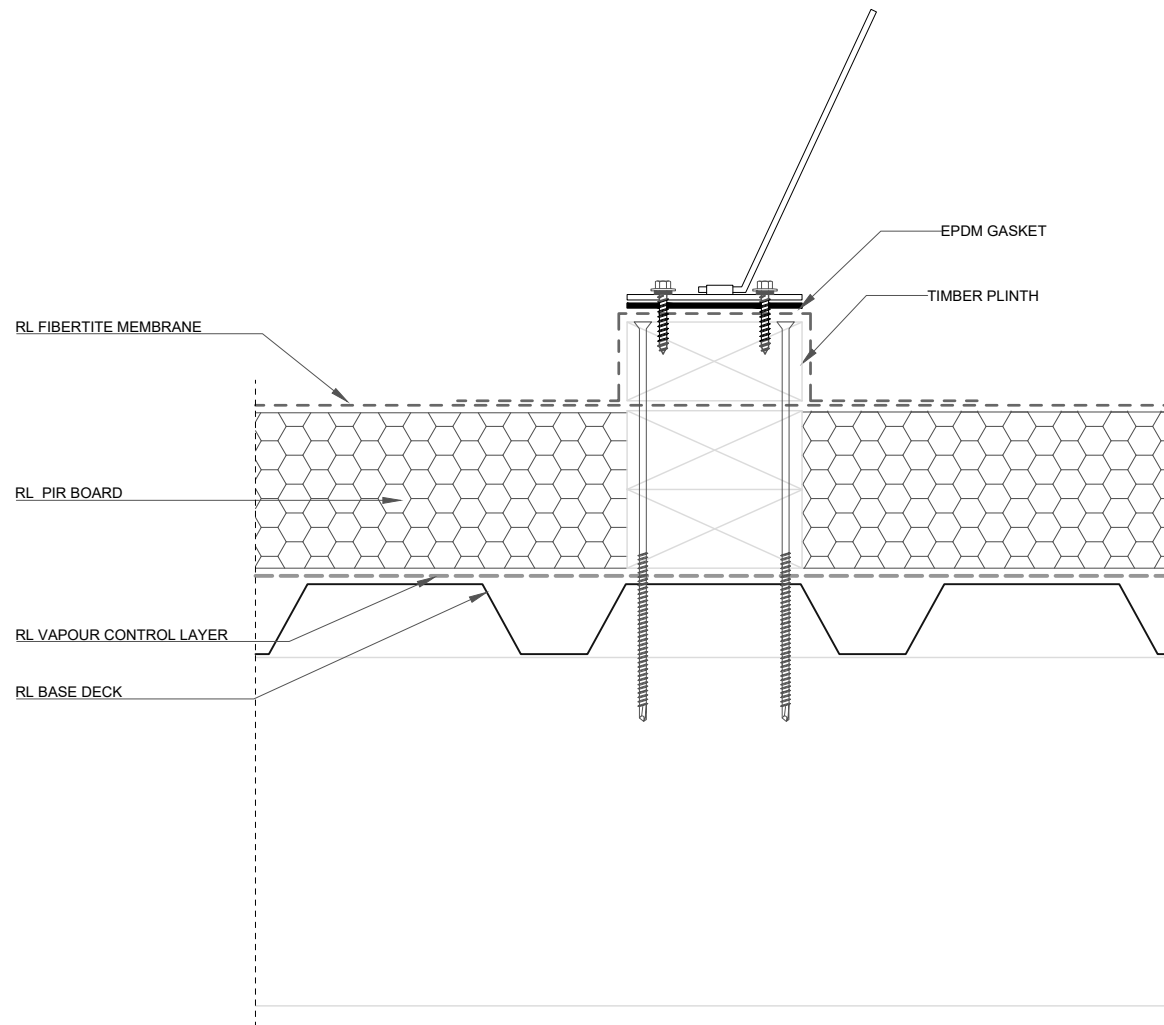


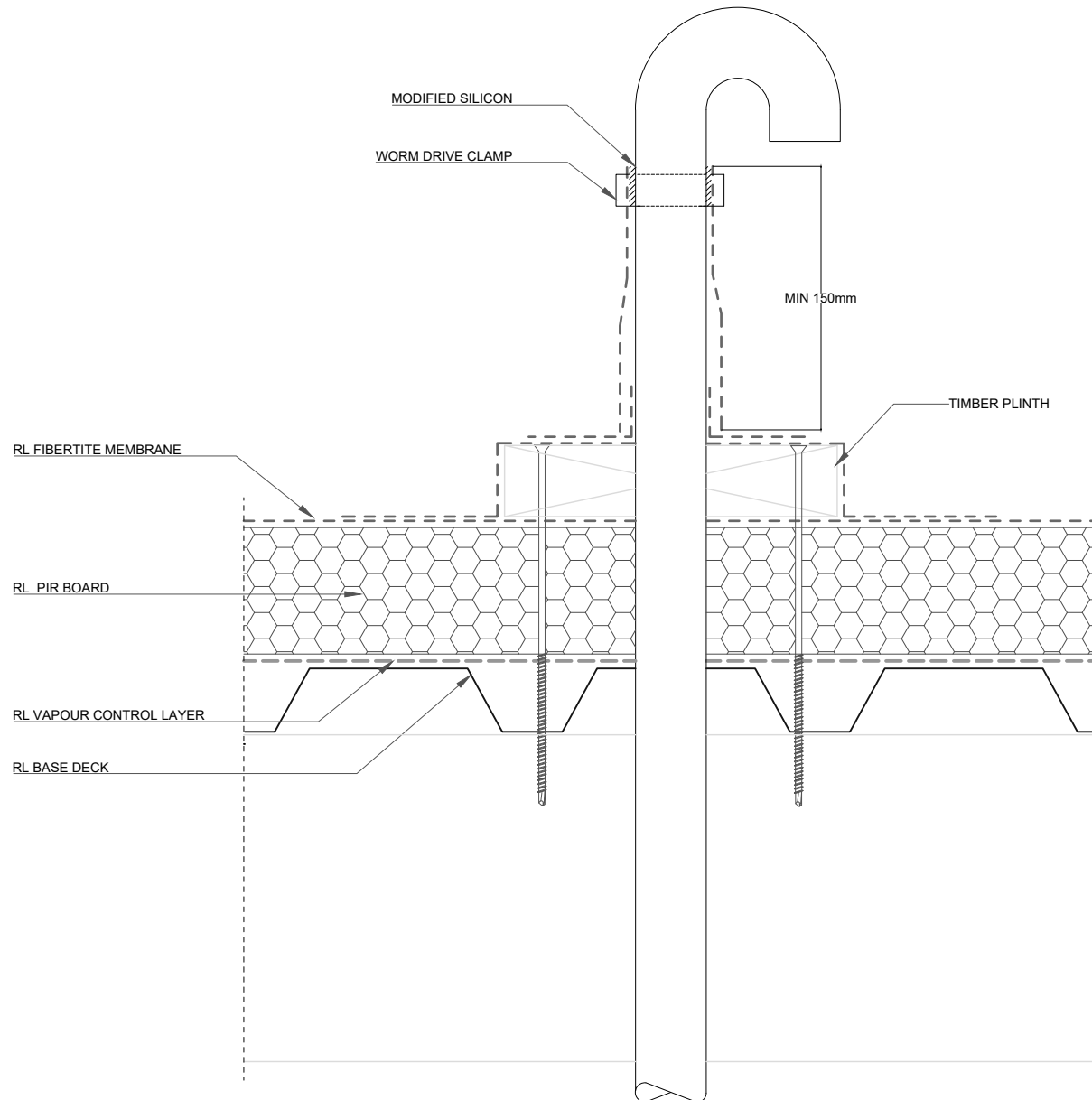


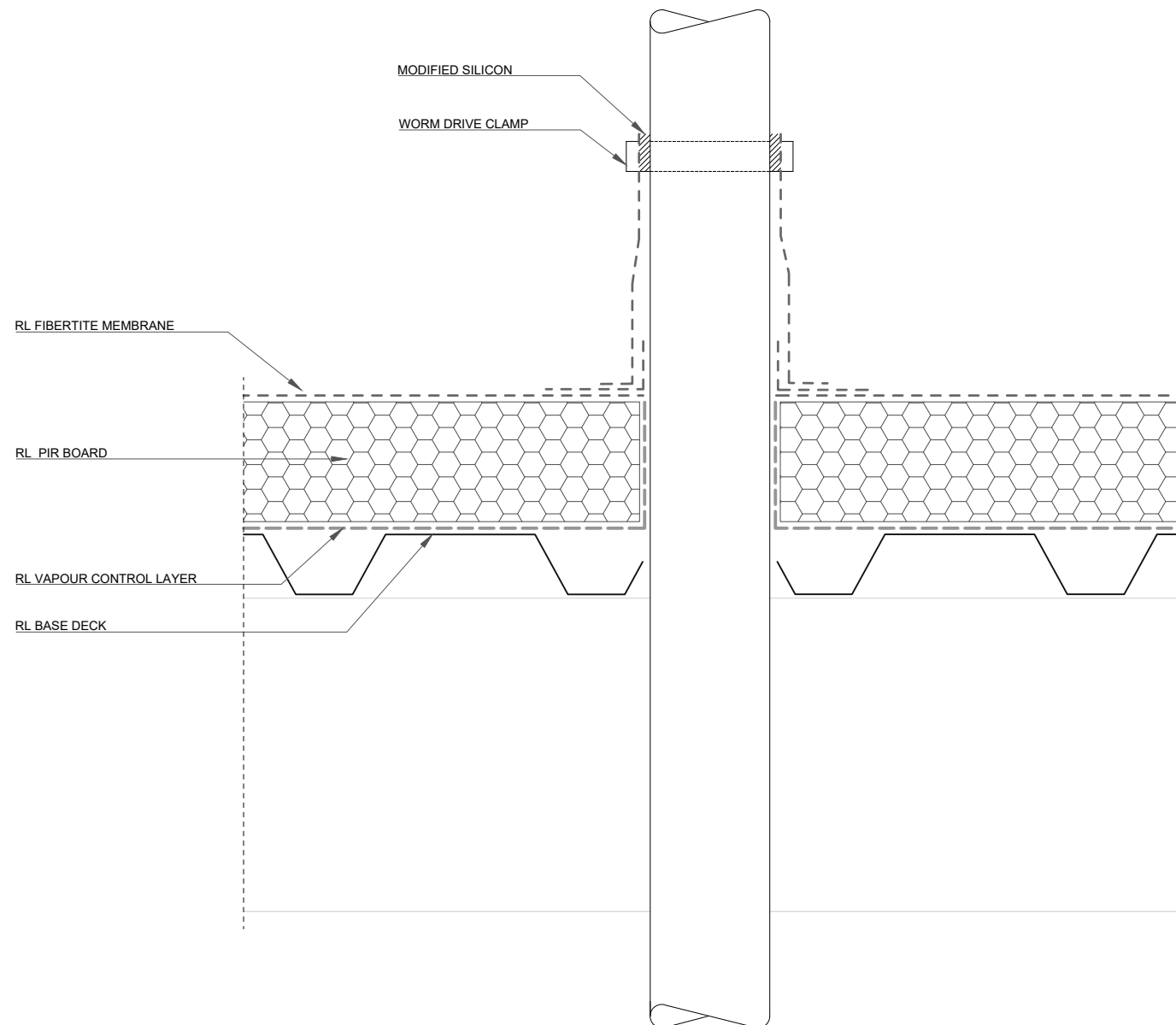


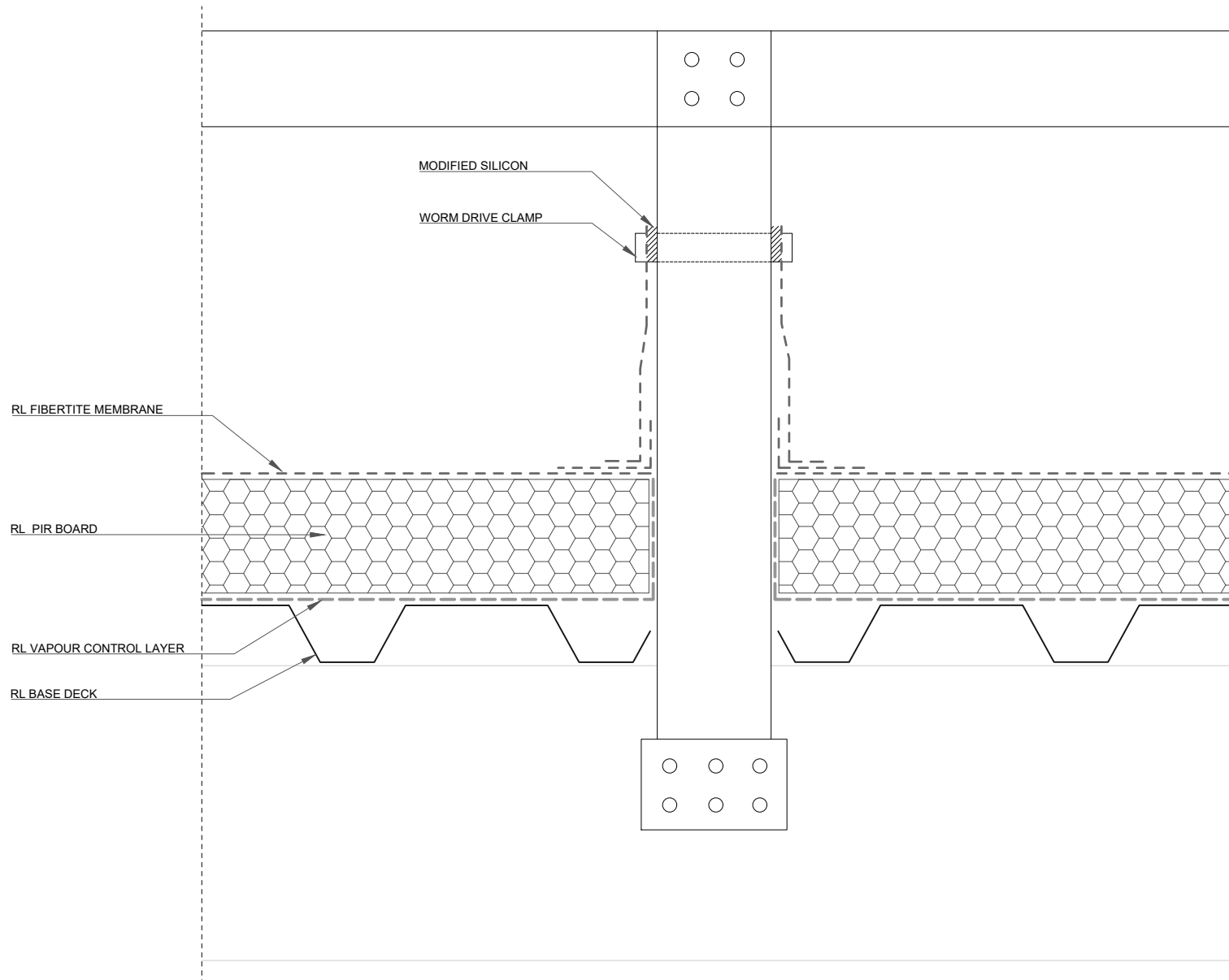


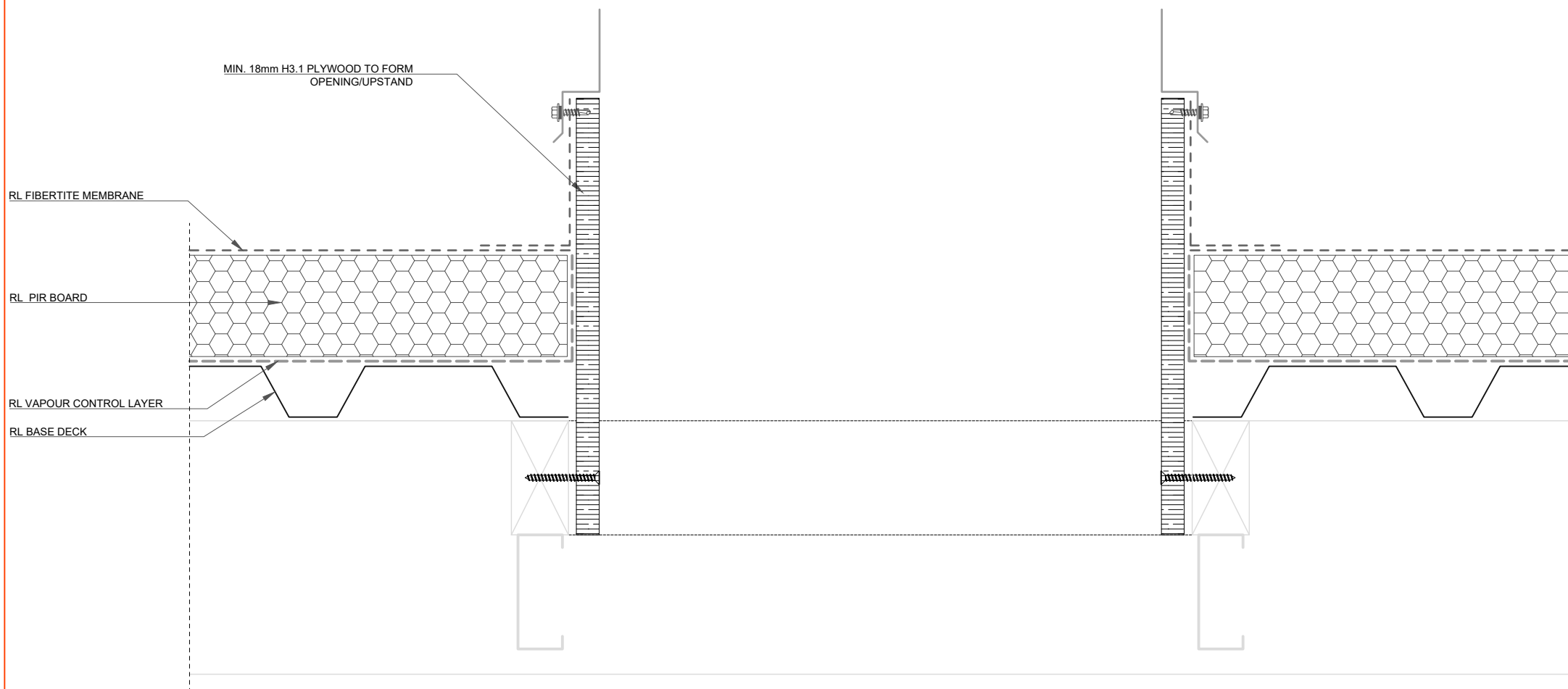












ROOFLOGIC SYSTEM:
ULTRATHERM XTREME
(SINGLE PLY MEMBRANE)

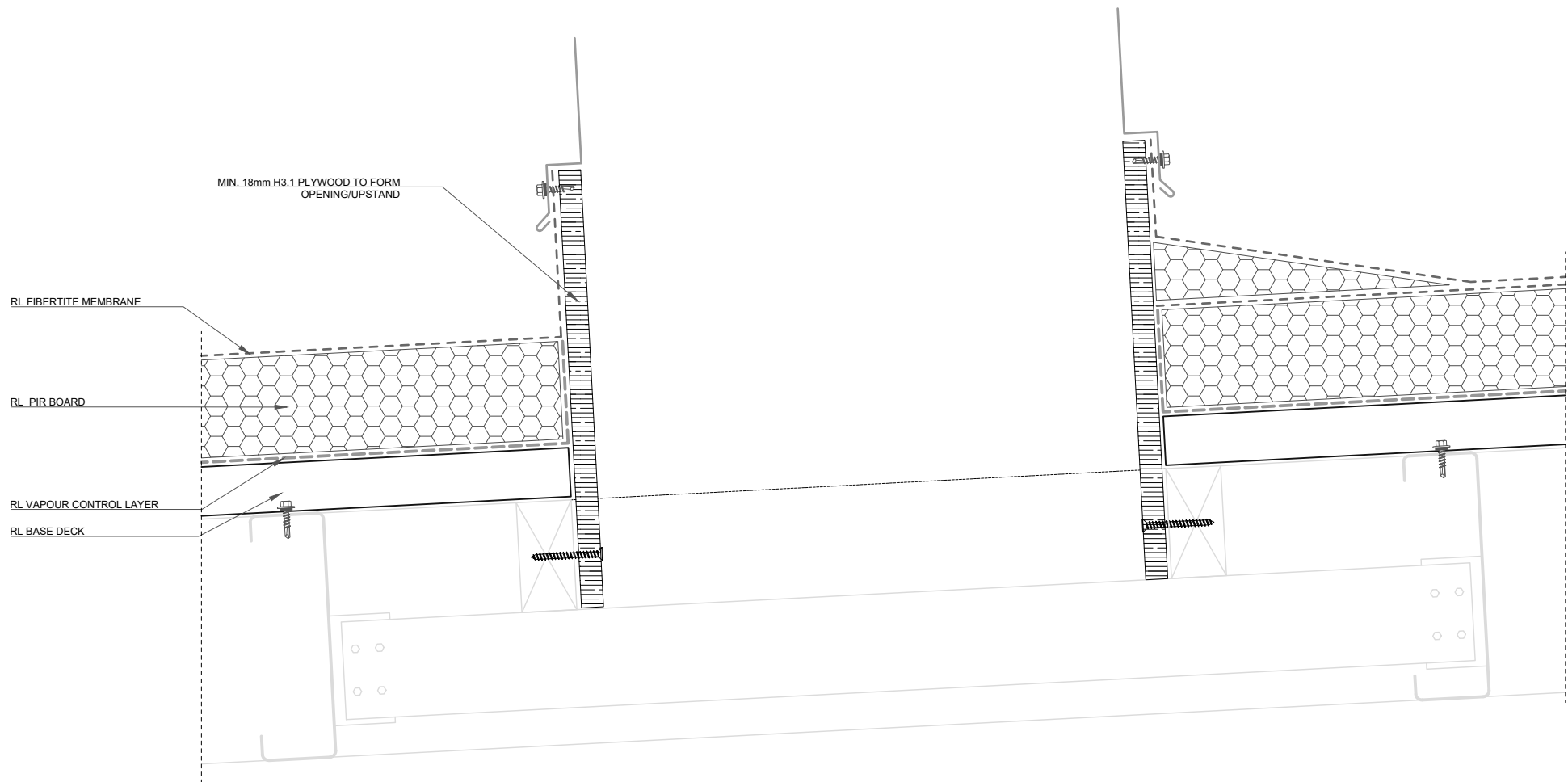
DRAWING:
BOX PENETRATION

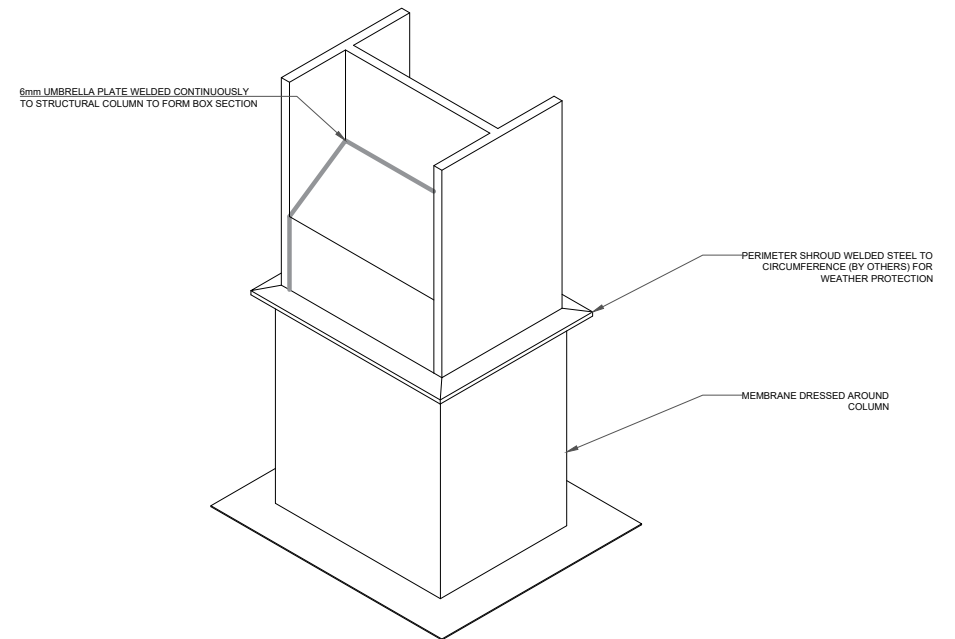
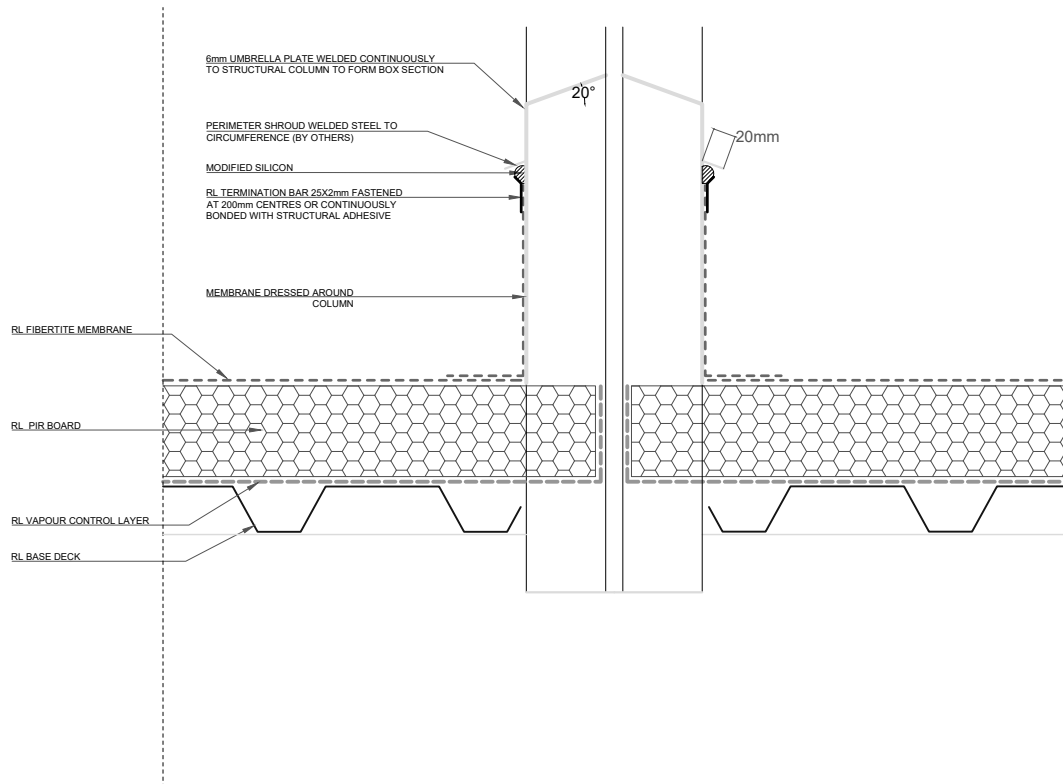
DRAWING NUMBER: 405

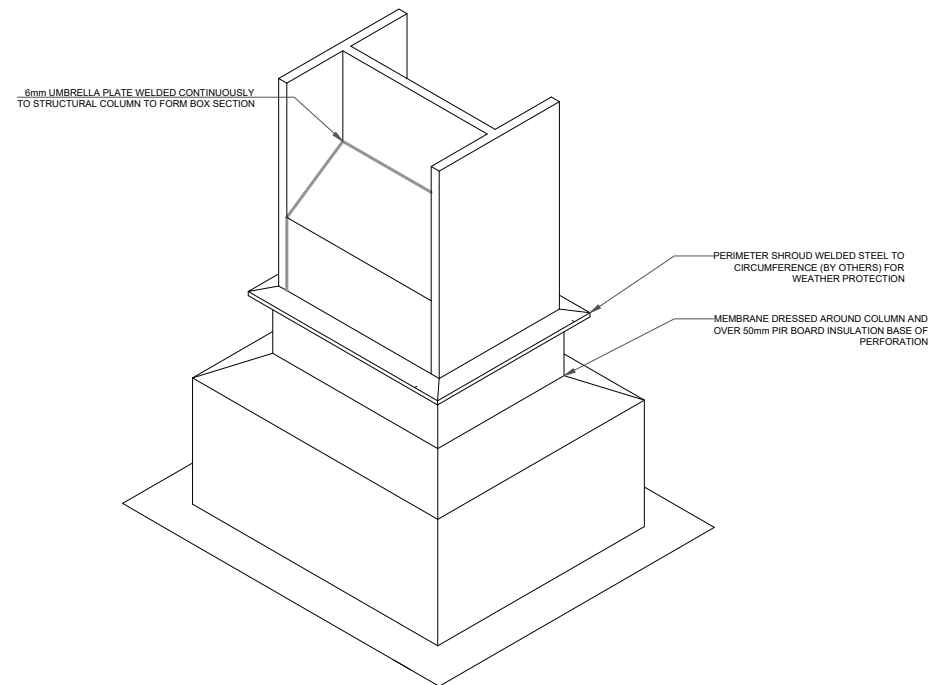
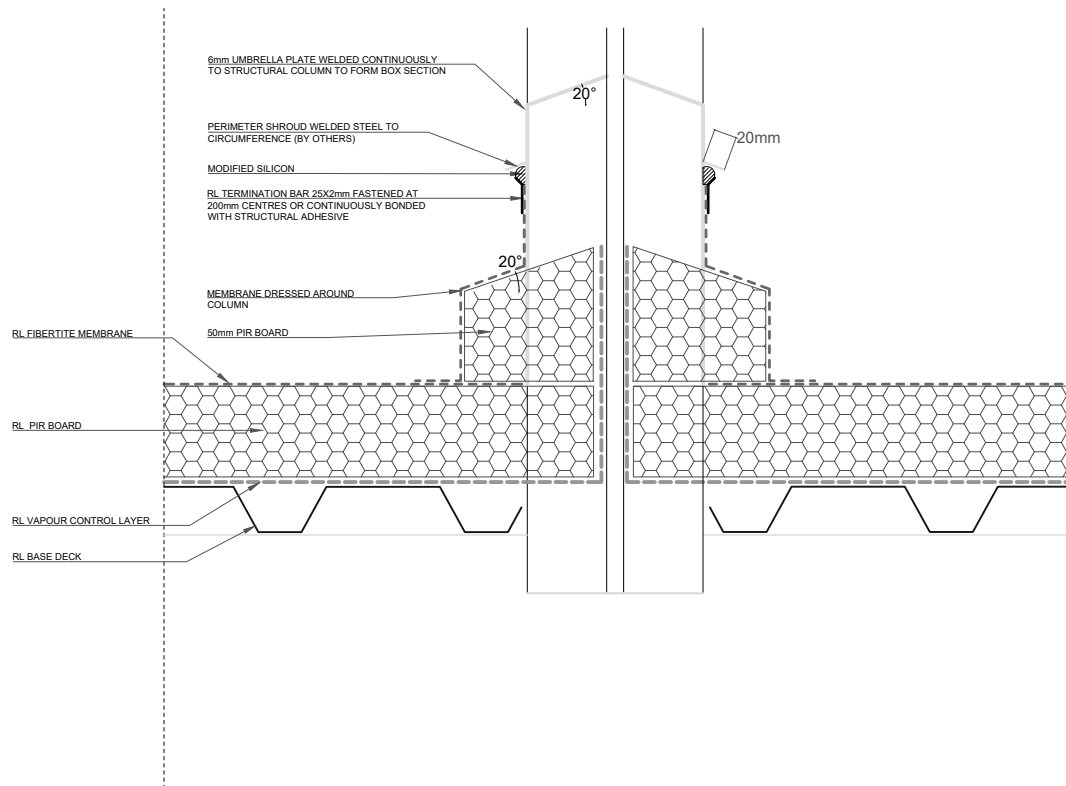
DRAWN SCALE: NTS

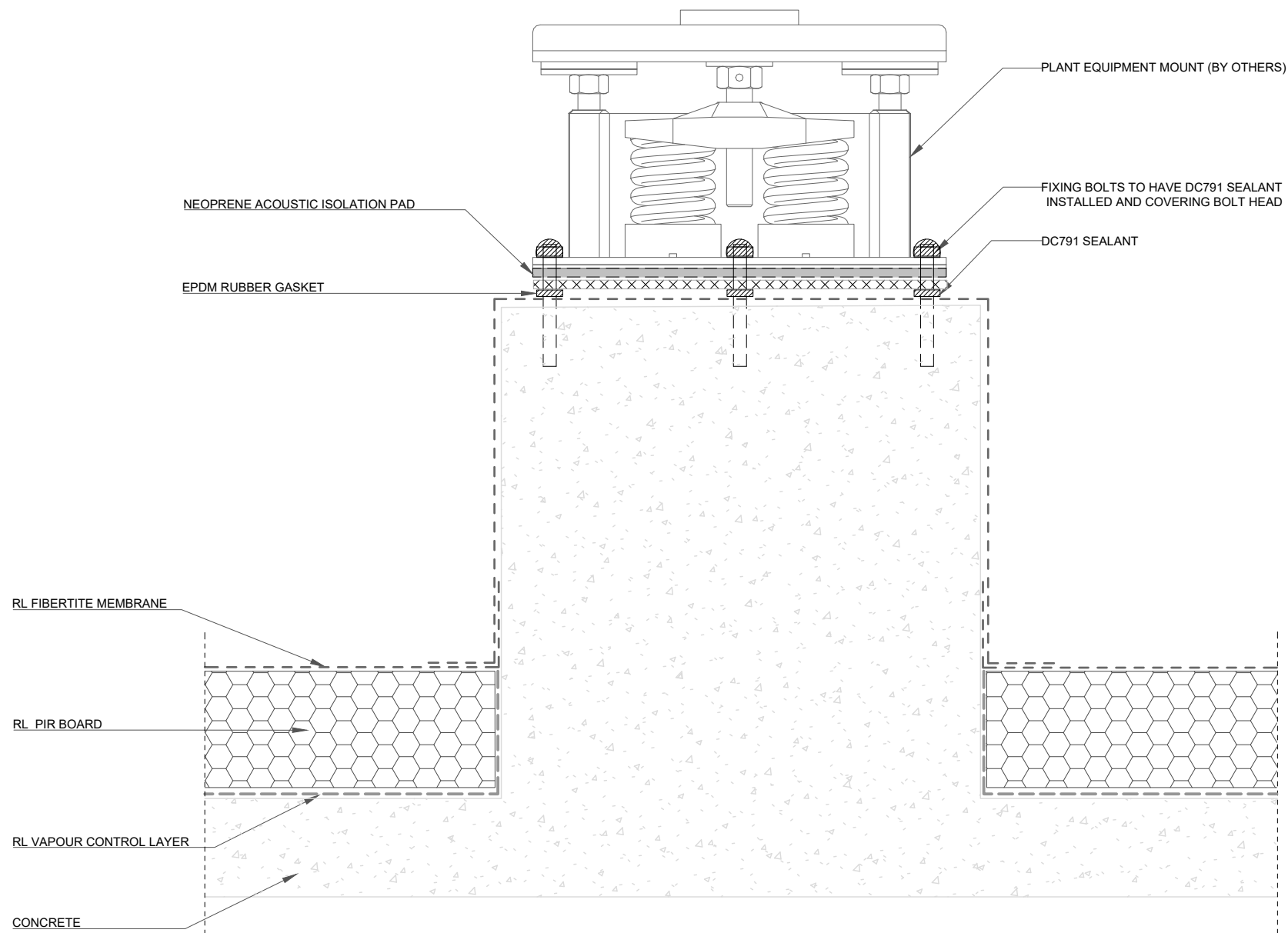
ROOFLOGIC.CO.NZ

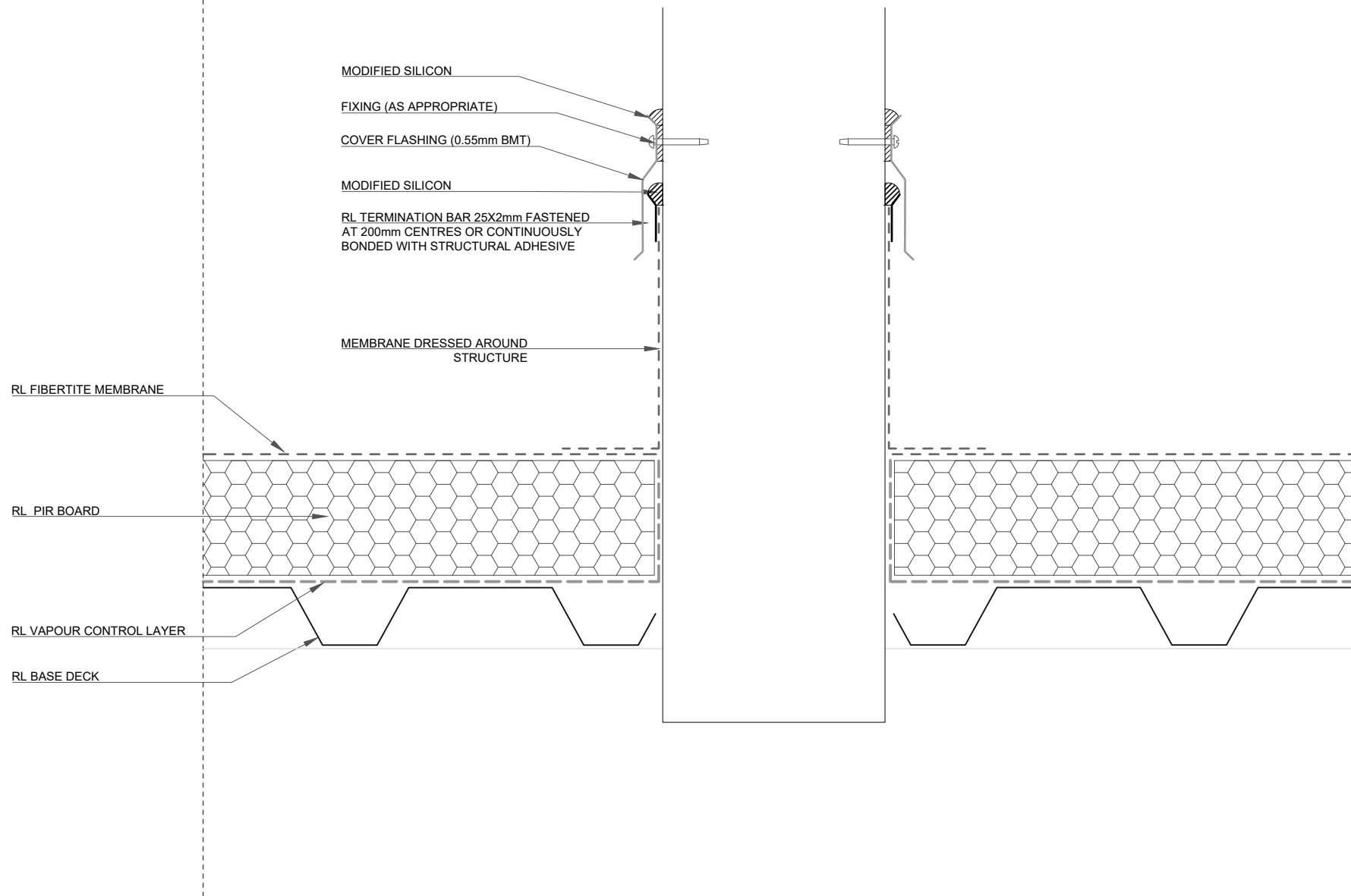
This drawing is the copyright of Rooflogic. Modification of details for job specification requirements must be approved by Rooflogic. The building designer is ultimately responsible to ensure all building work is designed and constructed according to Building Code requirements, NZ standards and best code of practice industry guidelines. All components must be supplied by Rooflogic. Rooflogic reserves the right to alter or upgrade details at any time without prior notice.

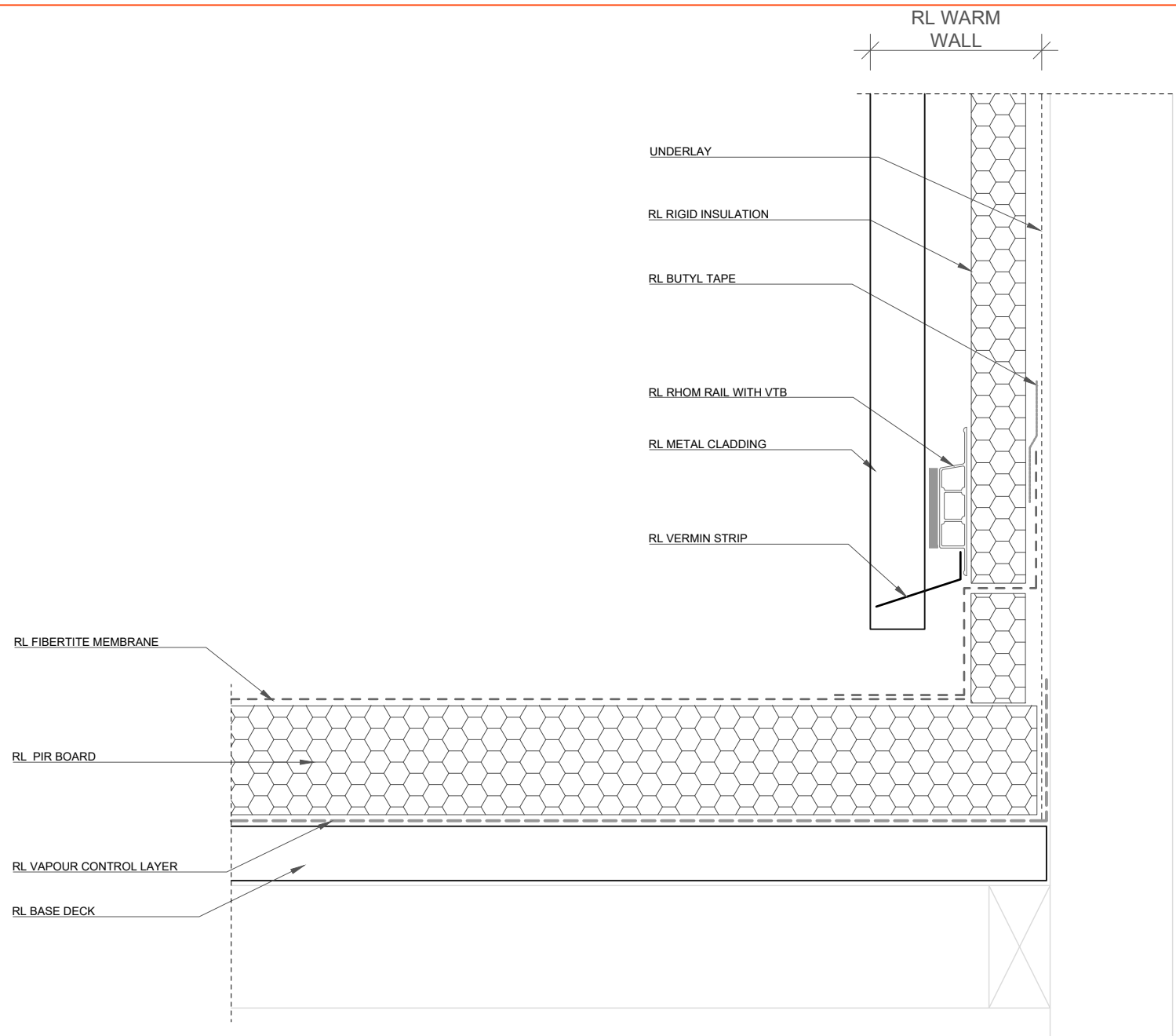


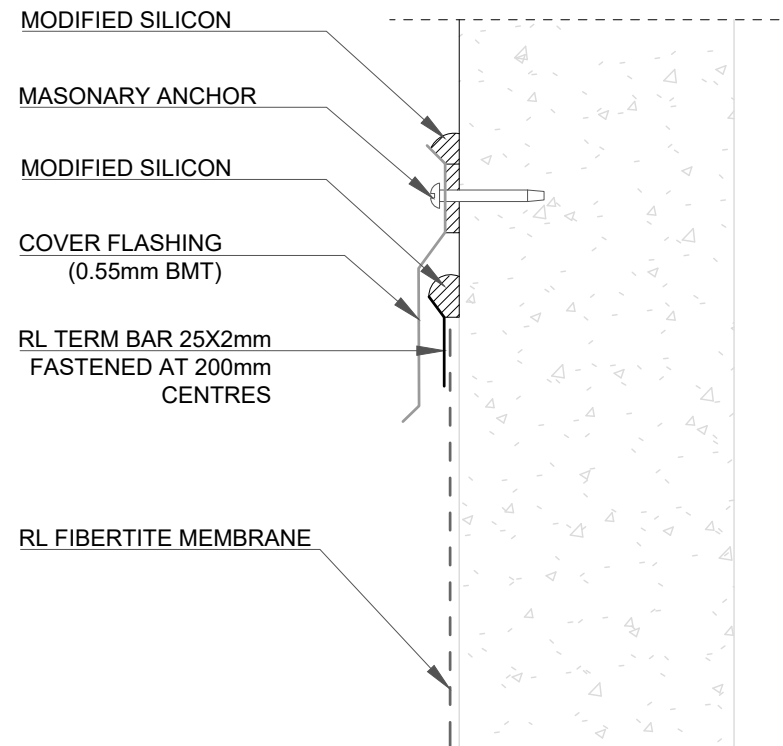


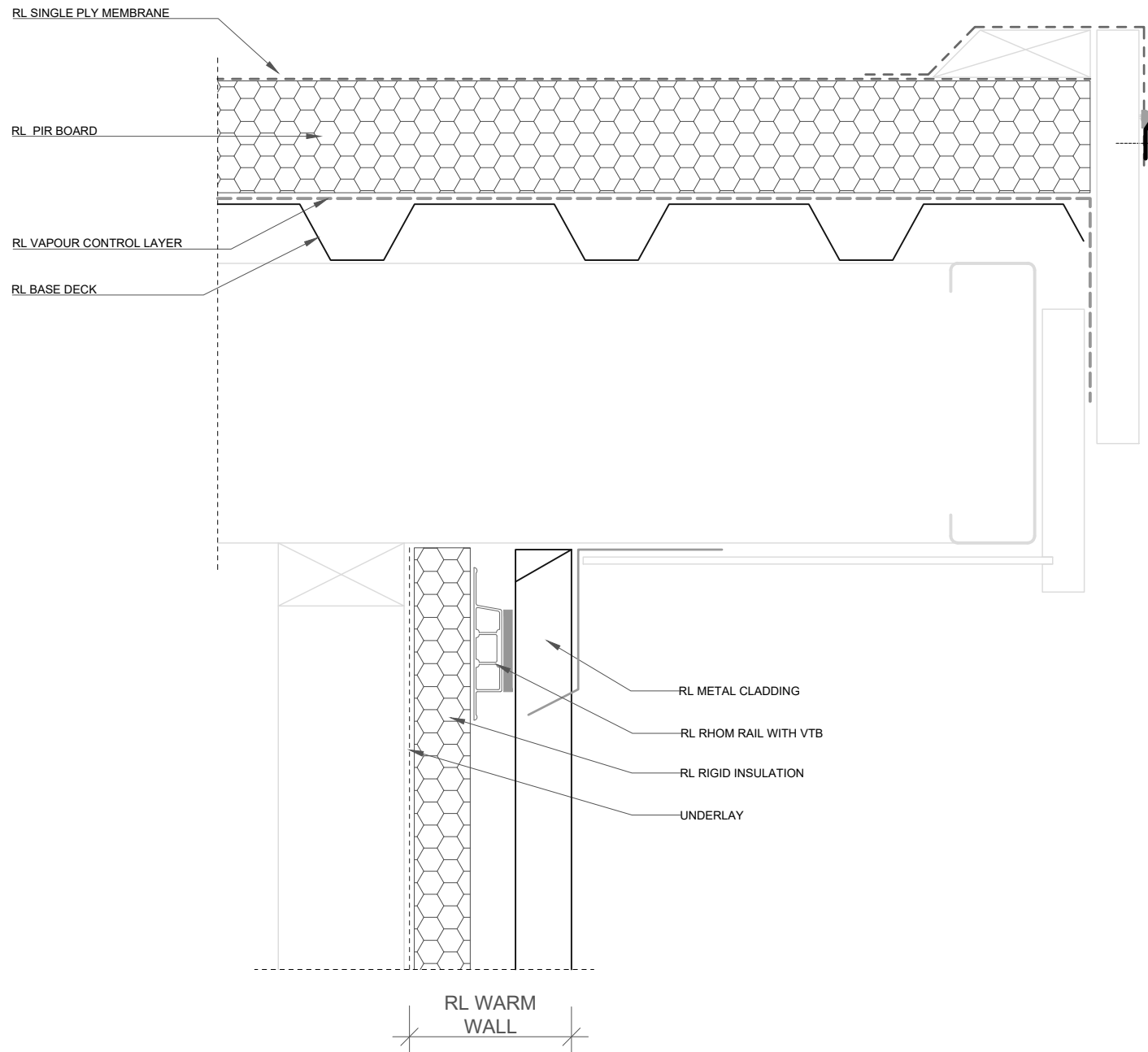


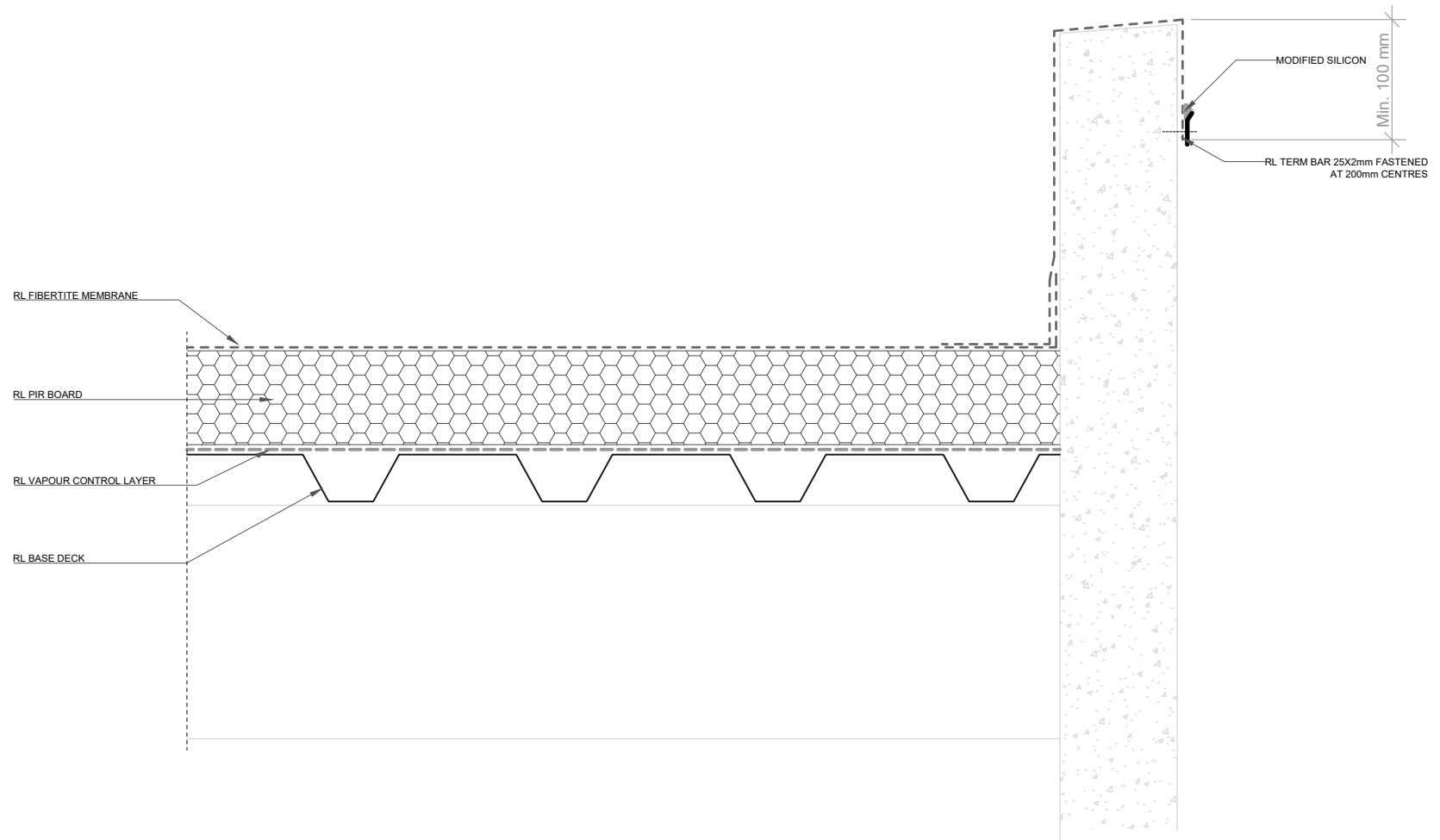


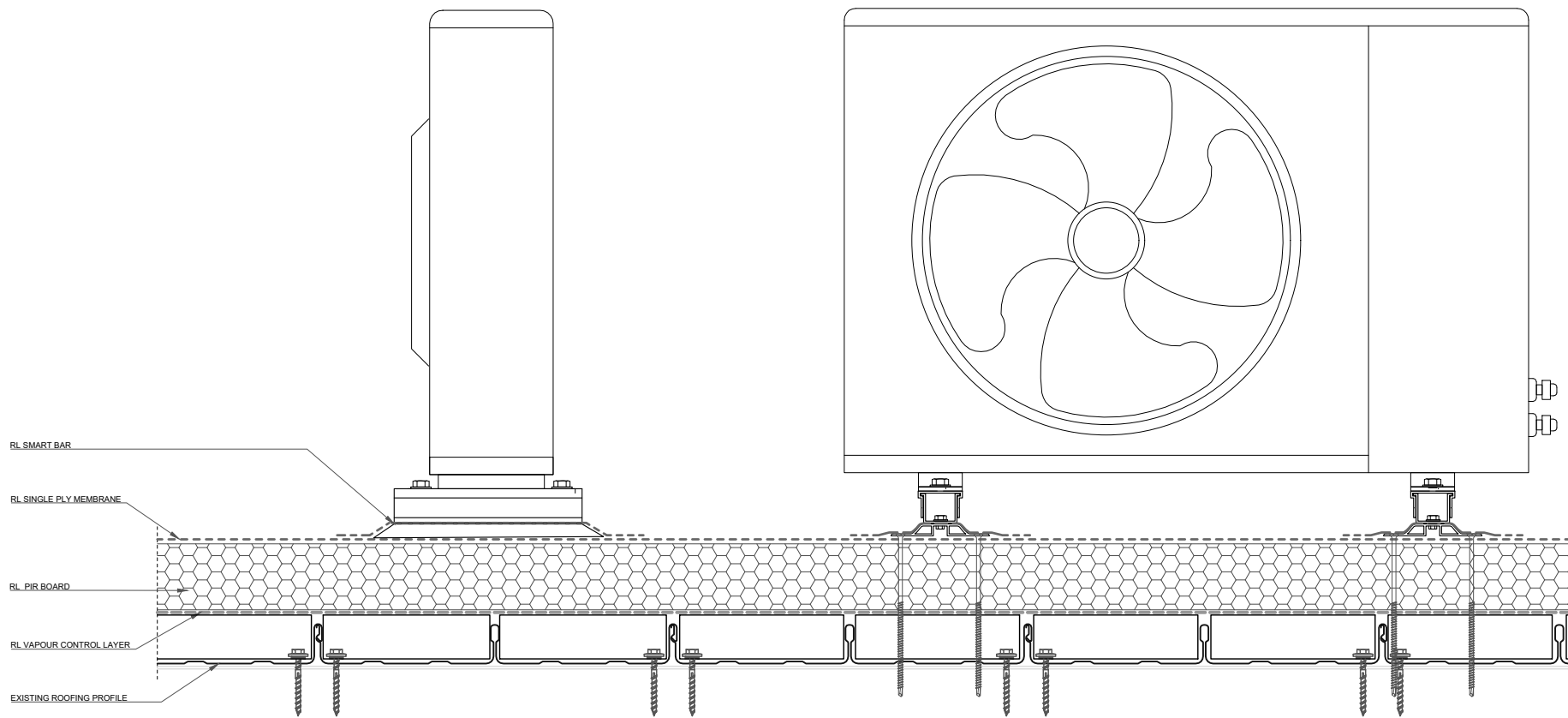












ROOFLOGIC SYSTEM:
ULTRATHERM XTREME
(SINGLE PLY MEMBRANE)

DRAWING:
RL SMART BAR – TYPICAL

DRAWING NUMBER: 600

DRAWN SCALE: NTS

ROOFLOGIC.CO.NZ

This drawing is the copyright of Rooflogic. Modification of details for job specification requirements must be approved by Rooflogic. The building designer is ultimately responsible to ensure all building work is designed and constructed according to Building Code requirements, NZ standards and best code of practice industry guidelines. All components must be supplied by Rooflogic. Rooflogic reserves the right to alter or upgrade details at any time without prior notice.

