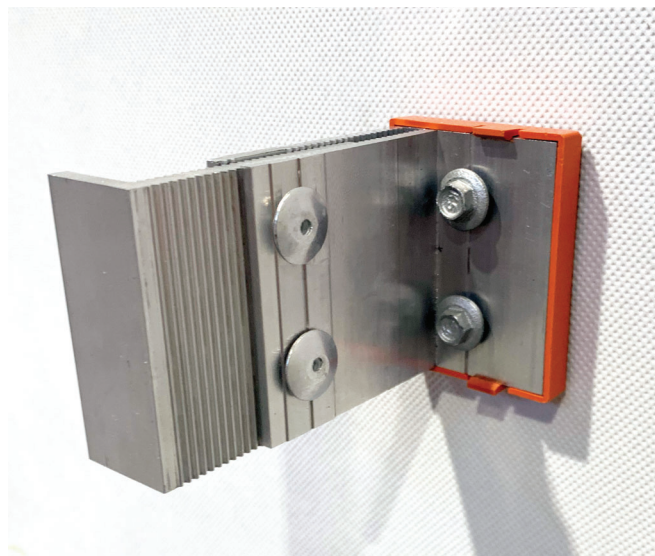


# RL AZ BRACKET

## For RoofLogic Façade Systems

The AZ Bracket is an adjustable structural bracket for Warm Wall Systems



RL AZ Bracket during installation

### DESCRIPTION

The RL AZ Bracket is a versatile structural bracket specifically designed for wall cladding systems that incorporate external insulation. Its adjustable depth feature enables it to accommodate various insulation thicknesses while providing the flexibility to straighten the substrate if needed.

This bracket serves as a reliable attachment point for the RL Rhom Rail, which is an integral component of the cladding system. The cladding is then installed over the Rhom Rail assembly, typically using mechanical attachments through the front wall of the rail.

Manufactured from high-quality Aluminium alloy (6063T5), the RL AZ Bracket features a 5 mm polypropylene thermal break base with 1.5 mm EPDM gasket. This thermal break helps to minimise thermal bridging and enhance the energy efficiency of the cladding system. The EPDM gasket serves as a seal between the bracket and the rain control layer or substrate, providing an effective barrier against moisture ingress.

### APPLICATION

- Armac AZ Bracket is to be used as a component within a properly designed cladding system. Consult RoofLogic in respect to design and project considerations.
- RL AZ Bracket is designed to be installed in conjunction with external insulation such as Smart Façade or Stonewool Insulation.

Technical Data-AZ BRACKET		
Base length/width ( mm)	60 mm x 45 mm	
Overall Depth ( mm)	70 mm-130 mm	
Maximum/minimum insulation thickness	50 mm-120 mm	
Loadings		
(ULS)	Edge	Main Body
Positive	2.0kPa	
Negative	2.5kPa	1.3kPa
Spacings		
	Edge	Main Body
Between rails	1200 mm	1200 mm
Between AZ Brackets	300 mm	600 mm
Fixings into studs:		
Steel 1.6BMTT, G450, Z275 Base Material	Konnect Steeltite hex head with bonded washer. Grade 304 stainless steel ST14-1490G304HSDWS	
Timber Substrates (Minimum embedment 36 mm)	Konnect Steeltite hex head with seal. Grade 316 Stainless Steel TT14-10x50G316T17N	
Cladding Weight	Light weight cladding <30kg/m2	